



**BERKSHIRE
HATHAWAY**
HomeServices

C. Dan Joyner, REALTORS®

COMMERCIAL DIVISION

Presented by

Hope Tz Schmalzl

www.Hopetzcommercial.com

Cell: 864-630-0352

Hopetz@JoynerCommercial.com

&

Bryon Culbertson

Cell: 864-420-2326

BCulbertson@JoynerCommercial.com

Bed and Breakfast Lodge

151 Shack Hollow Rd | Salem, SC 29676



**Fabulous B&B lodge located near
Lakes Jocassee and Keowee and
overlooking the scenic Blue Ridge Mountains**

Turn Key Opportunity



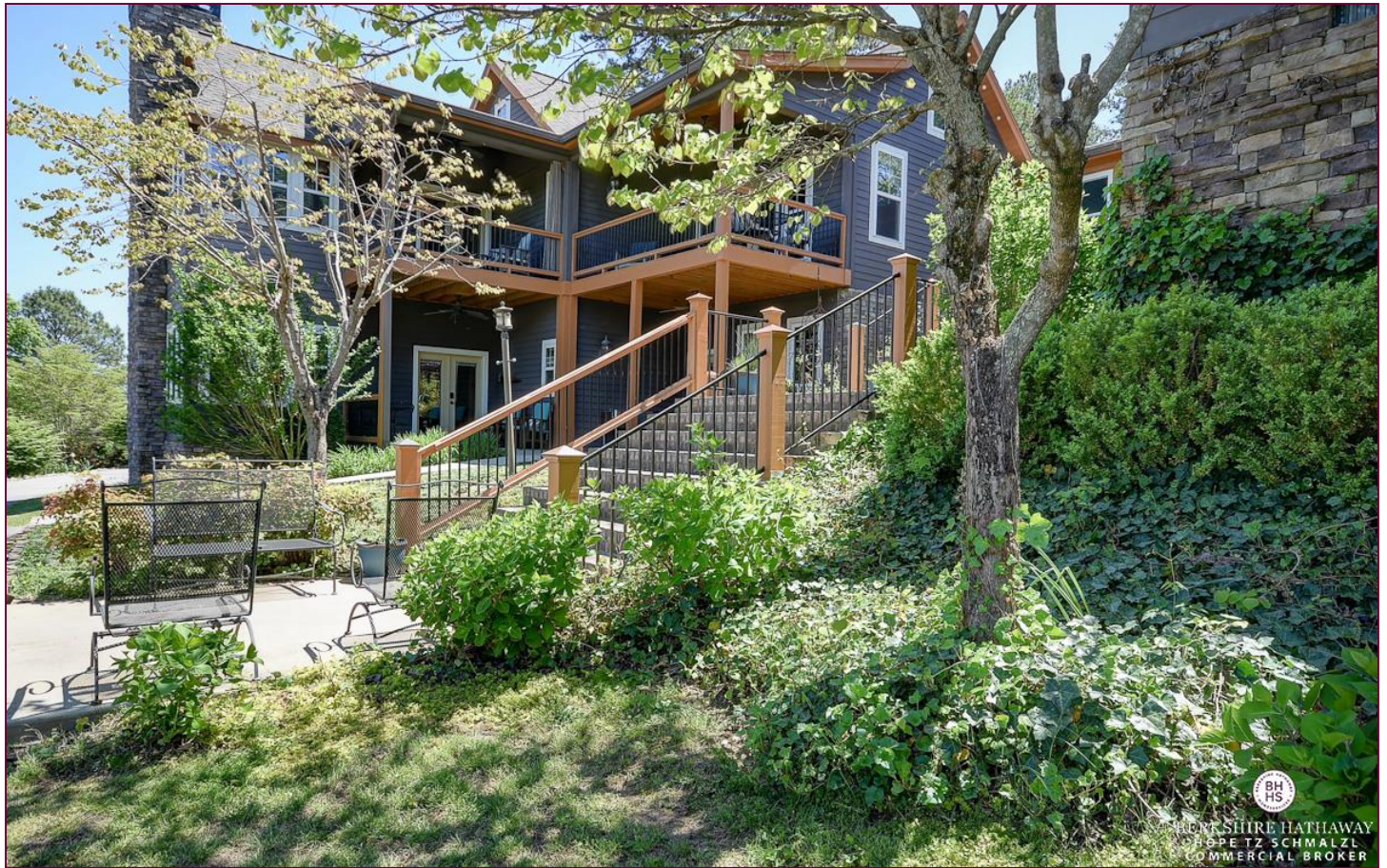
**BERKSHIRE
HATHAWAY**
HomeServices

C. Dan Joyner, REALTORS®

COMMERCIAL DIVISION

24 Vardry Street, Suite 401; Greenville, SC 29601 · Email: HopeTz@JoynerCommercial.com
Phone: 864-233-7724 · Fax: 864-679-5720 · Cell: 864-630-0352

Sale Price: \$1,997,512
Zoned Mixed Commercial/ Residential/Farm



Lodge Includes

5 Ensuite bedrooms - 6.5 Bathrooms

Room amenities:

- Keyless Entry
- Private covered porches
- Gas log fireplaces
- Private Baths with jetted tubs
- Breakfast Kitchens



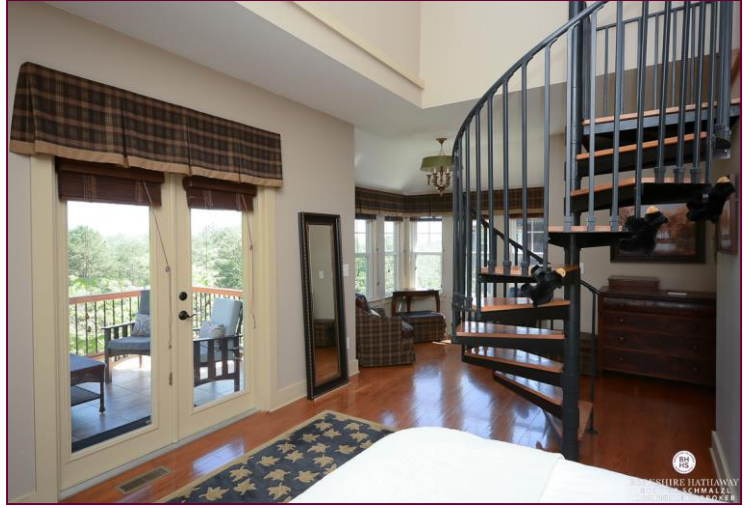
Property Includes

- Approx. 6,178± SF on 8.37± acres
- Oconee County - Tx Mp #046-00-01-056
- Taxes 2017 - \$7,584.37
- Land Use - Mixed Commercial/Farm









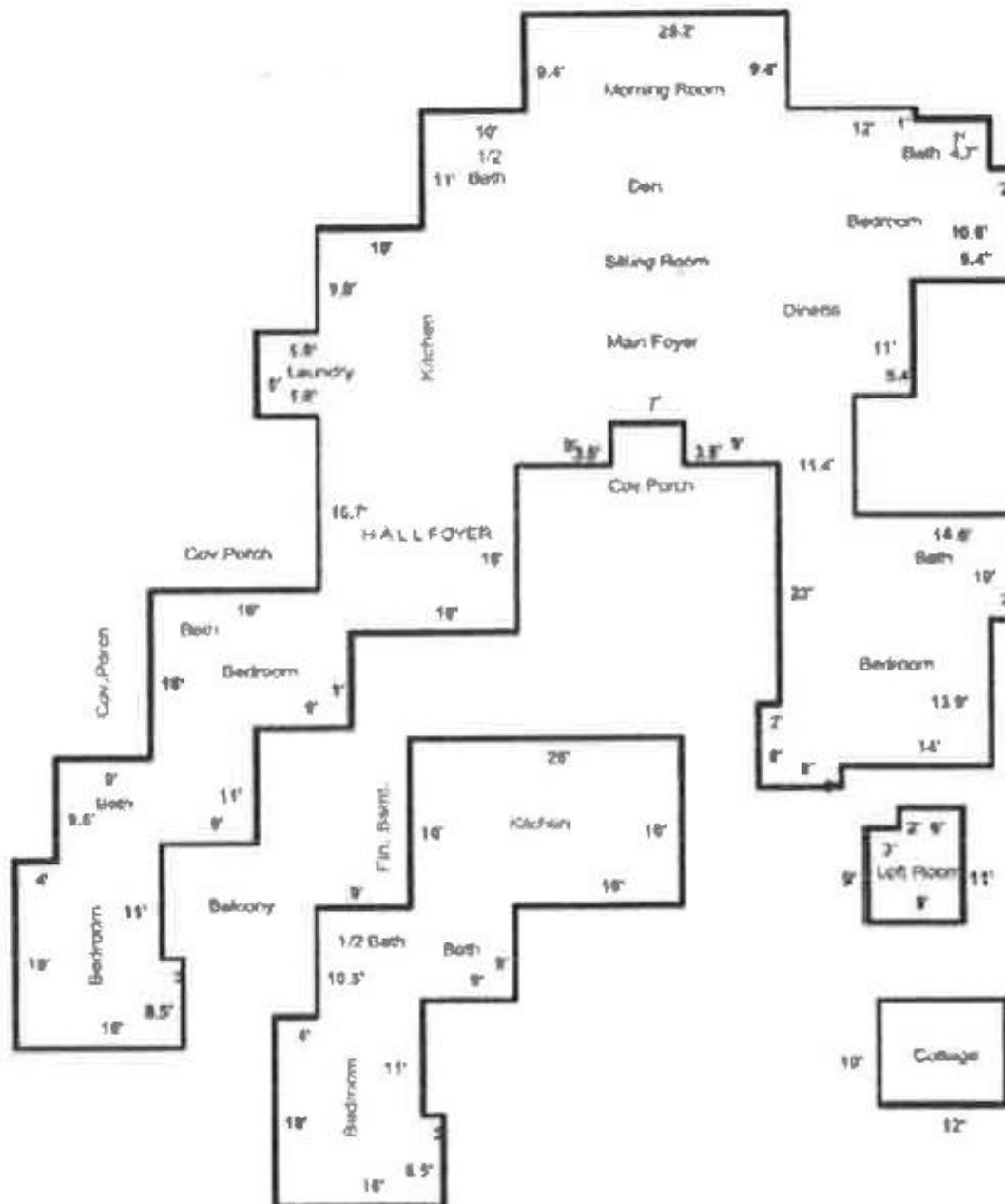


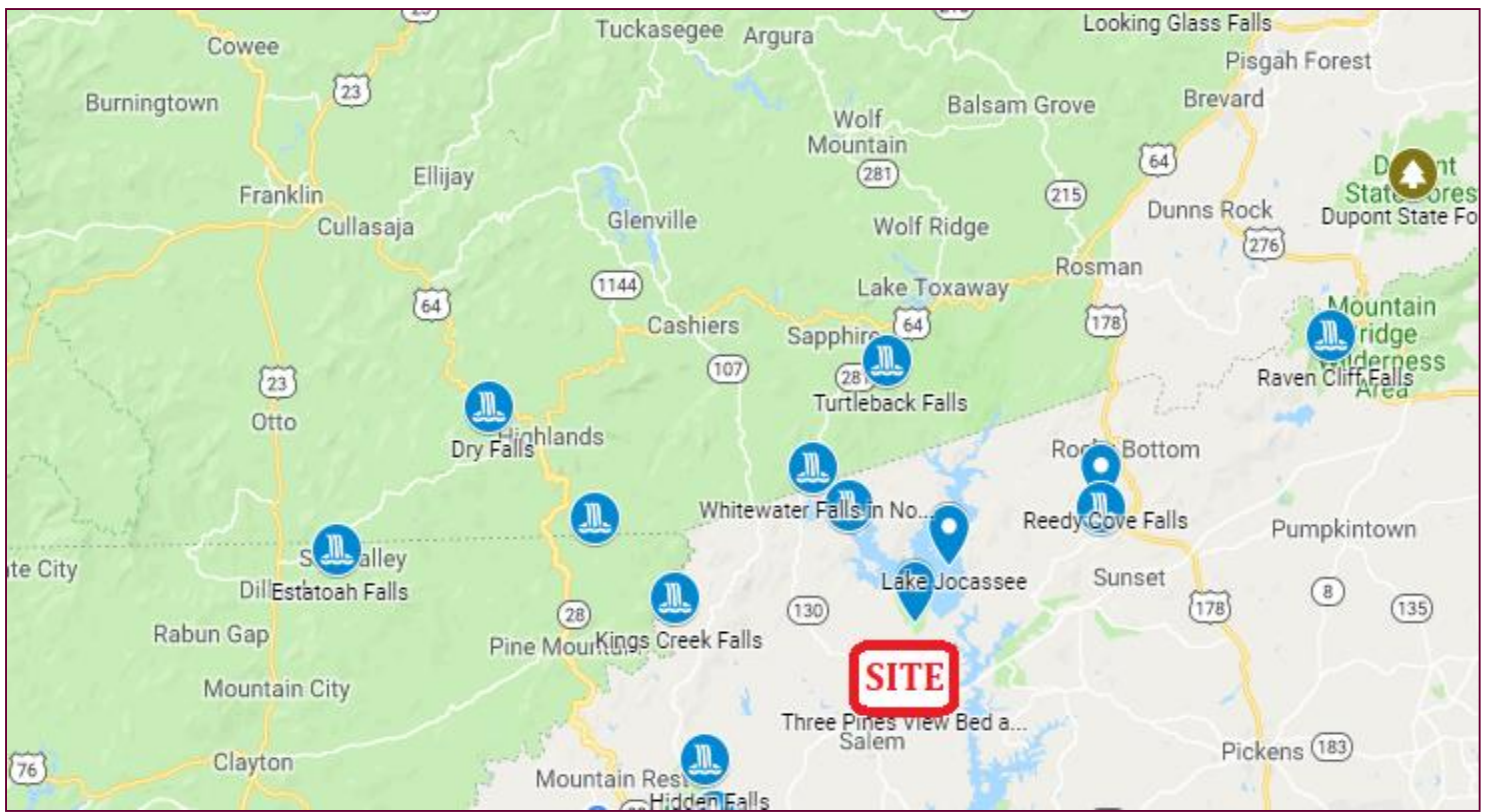


This property has a beautiful mountain view with an amazingly peaceful setting.
Great location for investment or personal retreat.

Property includes:

- Guest Kitchen
- Hiking nearby for guests to enjoy and relax
- Parking available for cars and boats
- Easy lake access with boat docks nearby





This lodge is located 2± miles from the lake and Devils Fork State Park. Jocassee is a beautiful lake like no other. Crystal clear water, stunning waterfalls and uninterrupted mountain vistas surround you.

Tourism Links

Numerous trails and waterfalls offer the perfect opportunity for an outing. Enjoy views, wildlife watching, and exercise, or just bring a picnic and relax!



[Visit Oconee SC](#)

[Upcountry South Carolina](#)

[Three Pines View](#)

Lakes in the Area

Lake Jocassee



The Lake Jocassee

Gorges have been featured as National Geographic's "50 of the World's Last Great Places – Destinations of a Lifetime" and it's only 1.5 hours from Greenville, SC. Devil's Fork State Park and it's Lake Jocassee are an easy and beautiful spot to explore this local wonder.

Lake Keowee

Lake Keowee

is a pristine 18,500 acre lake in the upstate of South Carolina. With breathtaking views of the Blue Ridge Mountains Lake Keowee is truly a hidden gem of the South East. Lake Keowee boasts over 300 miles of shoreline with tranquil coves and majestic open water views.



Lake Hartwell



Lake Hartwell

is a 56,000 acre lake operated by the US Army Corps of Engineers on the Georgia border. The lake is formed by the Savannah, Seneca, Tugaloo, and Chauga Rivers. Public access is provided by a number of public boat ramps, local parks, and Sadlers Creek and Lake Hartwell State Recreation Areas. I-85 crosses the lake near Clemson and Fair Play.

Parks in the Area

Devils Fork State Park



Devils Fork State Park is in northwestern South Carolina on the eastern edge of the Sumter National Forest at the edge of 7,500-acre (3,035 ha) Lake Jocassee. The park offers hiking, camping canoeing and kayaking. The park is well known for rainbow and brown trout, as well as largemouth, smallmouth, and white bass, crappie, bream and catfish. The park has accommodations for scuba divers, including a walk-in ramp.

Keowee - Toxaway State Park

Keowee – Toxaway State Park 1,000 acre park. Enjoy views of the Blue Ridge mountains and Jocassee Gorges at Keowee- Toxaway State Park on Lake Keowee. Camping, boating, hiking are popular here. Rental cabins available.

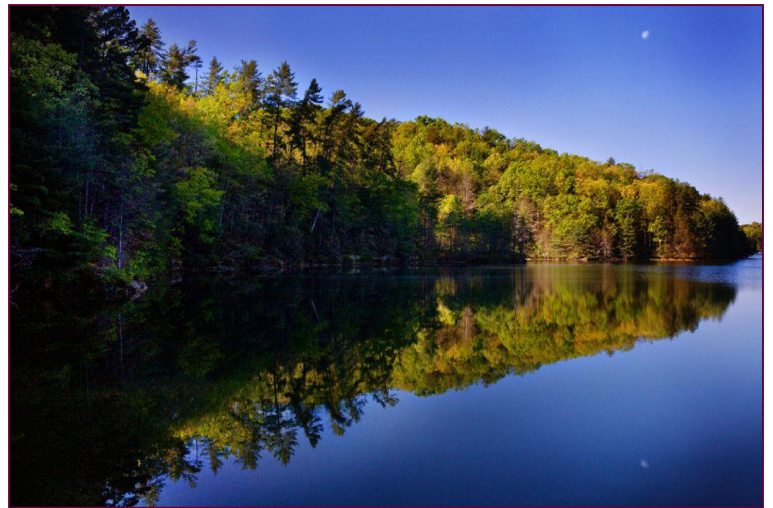


Table Rock State Park

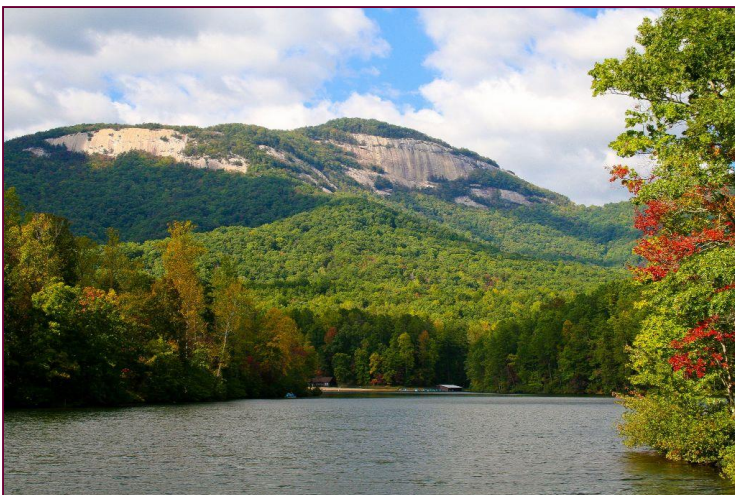
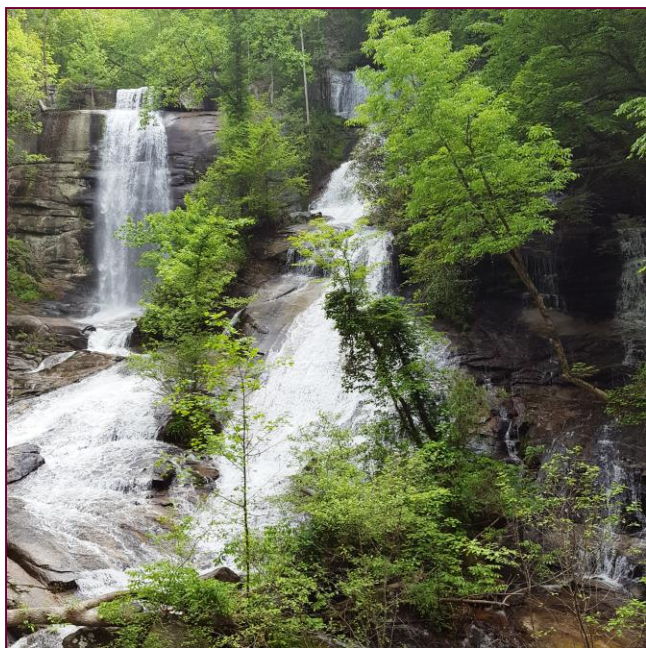


Table Rock State Park has natural beauty attributed to scenic Highway 11. The towering mountain, which gives the park its name, serves as a backdrop for the 3,000 acre park and its facilities. within the Blue Ridge Mountains, visitors can enjoy Table Rock State Park cabins, a campground and an old-fashioned swimming hole on one of the park's two lakes.

Waterfalls in the Area

Reedy Cove Falls



Reedy Cove Falls

is a pretty twin waterfall resulting from Eastatoe Creek splitting somewhere upstream. The result is you have one branch plunging some 70ft or so with the remaining branch cascading the same height. With some more cascading sections where both creeks rejoin at the base, I'd imagine that this waterfall has about 100ft cumulative drop.

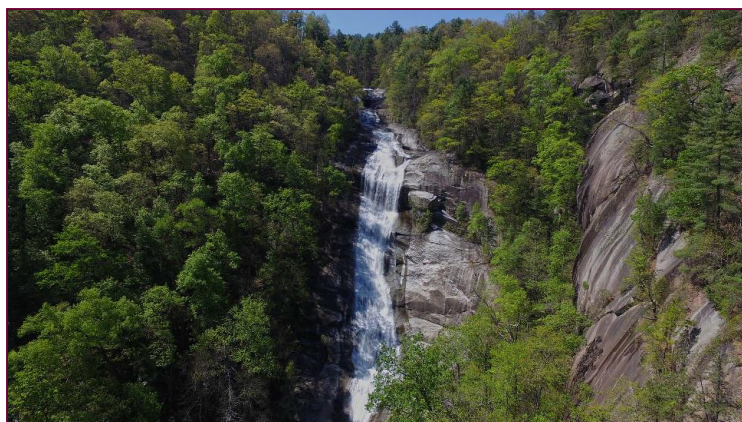
King Cove Falls



King Creek Falls

is a 70 foot falls near Burrells Ford on the Chatooga River. This waterfall provides a relaxing hike, photogenic falls, and places to dabble in the water. This hike through the Sumter National Forest is a 30 minute, moderate 1/2 mile one-way trip and suited to hikers of all abilities.

Lower Whitewater Falls



The entire **Whitewater Falls** chain – six different waterfalls along the North and South Carolina border – is the highest series of falls in eastern North America. the **Lower Falls** comprise a 200-foot drop as dramatic as any in this guide. From the parking area, a moderate hike of 45 minutes to an hour will get you to an overlook where you'll find an unparalleled view of Lower Whitewater Falls.