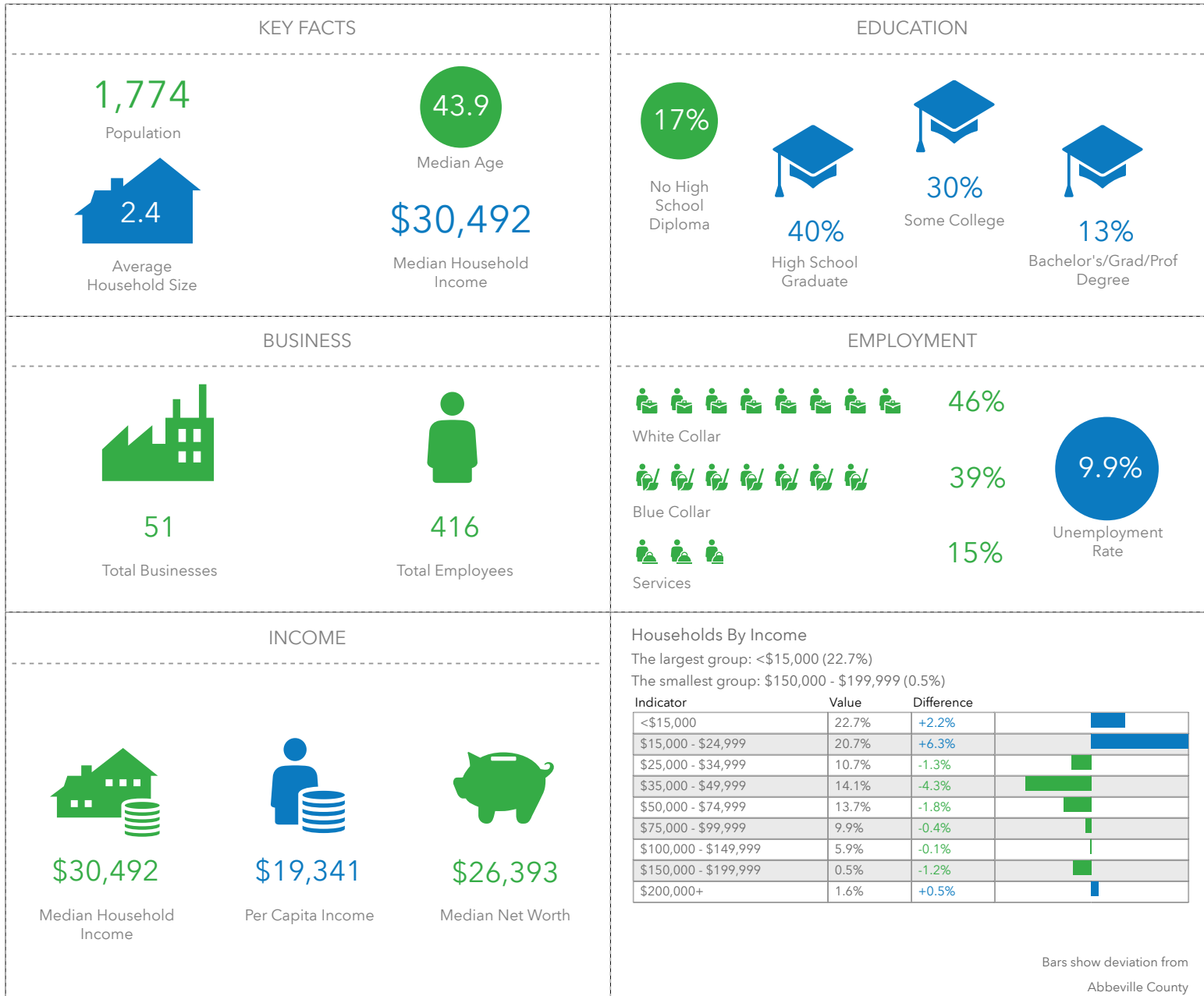


27 E Main St, Ware Shoals, SC 29692

27 E Main St, Ware Shoals, South Carolina, 29692 2 (Ring of 1 mile)
 27 E Main St, Ware Shoals, South Carolina, 29692
 Rings: 1 mile radii

KEY FACTS
 Latitude: 34.40075
 Longitude: -82.24352



KEY FACTS

1,774

Population

43.9

Median Age



Average Household Size

\$30,492

Median Household Income

EDUCATION

17%

No High School Diploma



40%
High School Graduate



30%
Some College



13%
Bachelor's/Grad/Prof Degree

BUSINESS



51

Total Businesses



416

Total Employees

EMPLOYMENT



White Collar

46%



Blue Collar

39%



Services

15%



9.9%
Unemployment Rate

INCOME



\$30,492

Median Household Income



\$19,341

Per Capita Income



\$26,393

Median Net Worth

Households By Income

The largest group: <\$15,000 (22.7%)

The smallest group: \$150,000 - \$199,999 (0.5%)

Indicator	Value	Difference	
<\$15,000	22.7%	+2.2%	<div style="width: 22.7%;"></div>
\$15,000 - \$24,999	20.7%	+6.3%	<div style="width: 20.7%;"></div>
\$25,000 - \$34,999	10.7%	-1.3%	<div style="width: 10.7%;"></div>
\$35,000 - \$49,999	14.1%	-4.3%	<div style="width: 14.1%;"></div>
\$50,000 - \$74,999	13.7%	-1.8%	<div style="width: 13.7%;"></div>
\$75,000 - \$99,999	9.9%	-0.4%	<div style="width: 9.9%;"></div>
\$100,000 - \$149,999	5.9%	-0.1%	<div style="width: 5.9%;"></div>
\$150,000 - \$199,999	0.5%	-1.2%	<div style="width: 0.5%;"></div>
\$200,000+	1.6%	+0.5%	<div style="width: 1.6%;"></div>

Bars show deviation from
Abbeville County

27 E Main St, Ware Shoals, SC 29692

27 E Main St, Ware Shoals, South Carolina, 29692 2 (Ring of 3 miles)

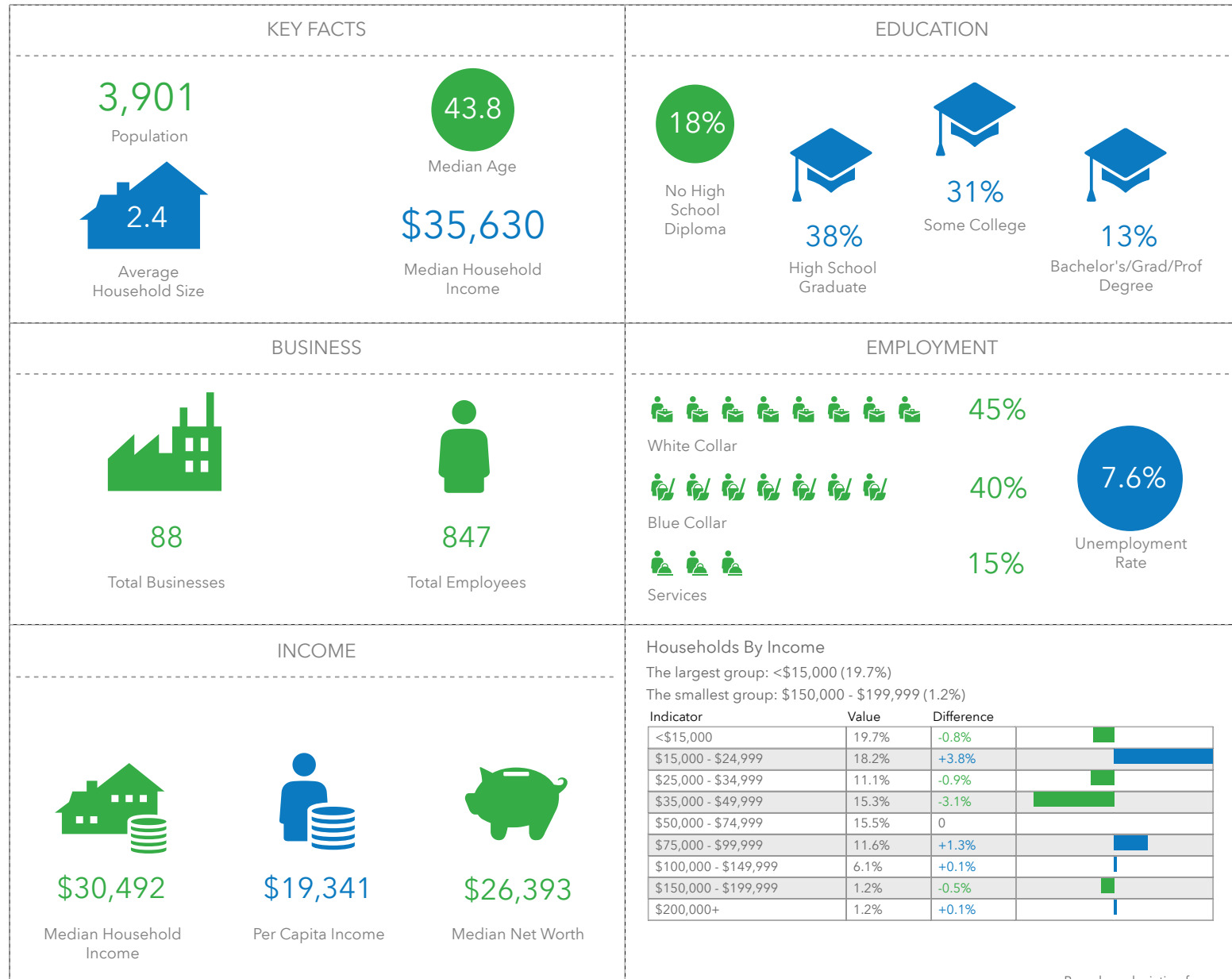
27 E Main St, Ware Shoals, South Carolina, 29692

Rings: 3 mile radii

KEY FACTS

Latitude: 34.40075

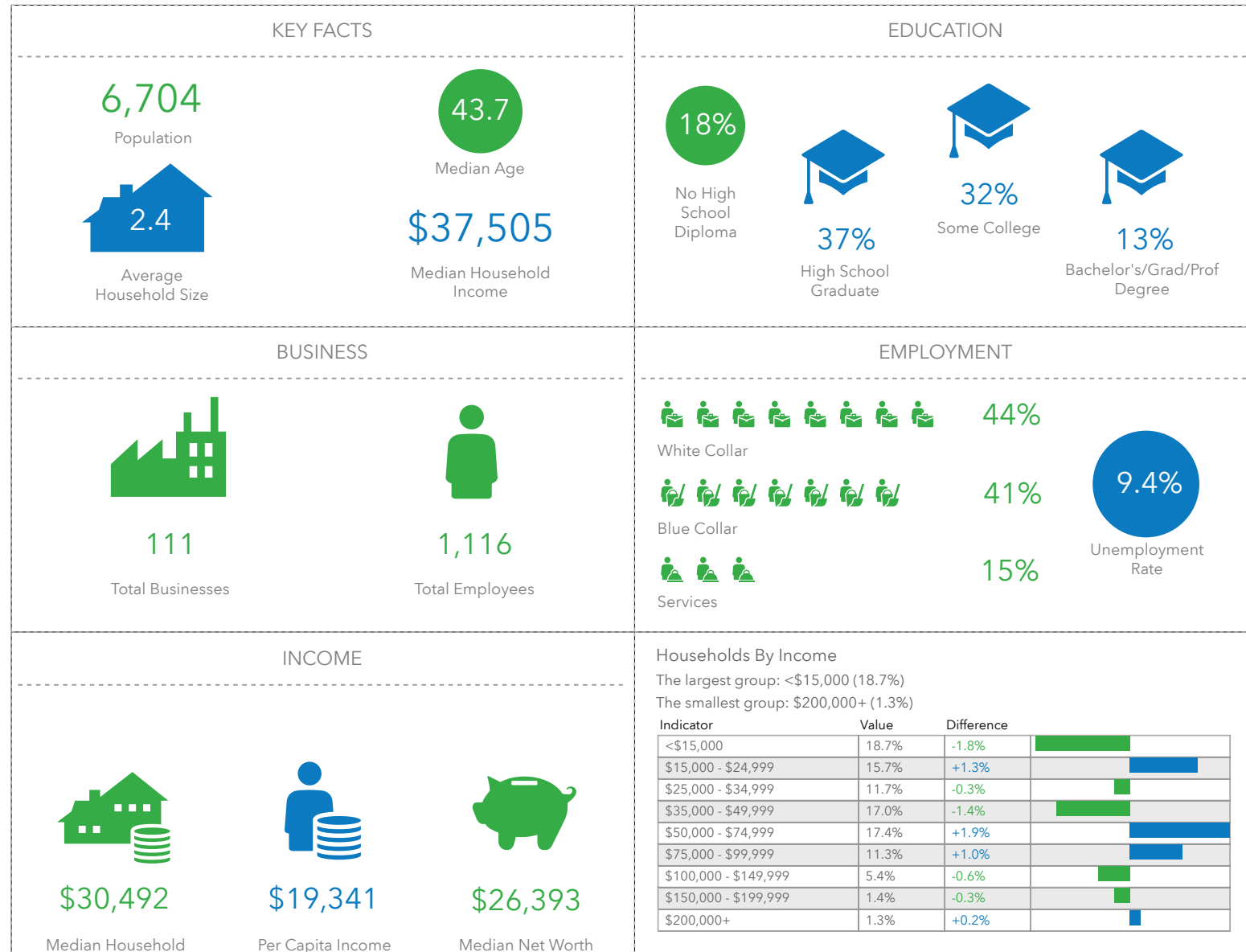
Longitude: -82.24352



27 E Main St, Ware Shoals, SC 29692

27 E Main St, Ware Shoals, South Carolina, 29692 2 (Ring of 5 miles)
27 E Main St, Ware Shoals, South Carolina, 29692
Rings: 5 mile radii

KEY FACTS
Latitude: 34.40075
Longitude: -82.24352



Income

Bars show deviation from
Abbeville County