



# Demographic and Income Comparison Profile

242 Adley Way, Greenville, South Carolina, 29607  
Rings: 1, 3, 5 mile radii

For Reference Use Only  
Latitude: 34.81714  
Longitude: -82.28503

	1 mile	3 miles	5 miles
<b>Census 2010 Summary</b>			
Population	4,635	43,187	119,735
Households	1,864	17,968	48,918
Families	1,215	11,549	32,416
Average Household Size	2.45	2.37	2.43
Owner Occupied Housing Units	1,295	11,801	31,918
Renter Occupied Housing Units	569	6,167	17,000
Median Age	36.3	38.8	37.8
<b>2017 Summary</b>			
Population	5,898	50,686	135,908
Households	2,373	21,327	55,424
Families	1,499	13,430	36,163
Average Household Size	2.46	2.35	2.44
Owner Occupied Housing Units	1,614	13,901	35,863
Renter Occupied Housing Units	759	7,426	19,561
Median Age	38.4	40.6	39.2
Median Household Income	\$73,531	\$67,659	\$67,354
Average Household Income	\$87,545	\$92,951	\$91,458
<b>2022 Summary</b>			
Population	6,581	55,667	147,811
Households	2,641	23,434	60,205
Families	1,653	14,610	39,043
Average Household Size	2.47	2.35	2.44
Owner Occupied Housing Units	1,804	15,303	39,036
Renter Occupied Housing Units	837	8,131	21,169
Median Age	39.7	41.8	40.2
Median Household Income	\$78,548	\$76,134	\$76,201
Average Household Income	\$98,046	\$103,711	\$102,465
<b>Trends: 2017-2022 Annual Rate</b>			
Population	2.22%	1.89%	1.69%
Households	2.16%	1.90%	1.67%
Families	1.98%	1.70%	1.54%
Owner Households	2.25%	1.94%	1.71%
Median Household Income	1.33%	2.39%	2.50%

Source: U.S. Census Bureau, Census 2010 Summary File 1. Esri forecasts for 2017 and 2022.



# Demographic and Income Comparison Profile

242 Adley Way, Greenville, South Carolina, 29607  
Rings: 1, 3, 5 mile radii

For Reference Use Only

Latitude: 34.81714

Longitude: -82.28503

2017 Households by Income	1 mile		3 miles		5 miles	
	Number	Percent	Number	Percent	Number	Percent
<\$15,000	156	6.6%	1,749	8.2%	4,008	7.2%
\$15,000 - \$24,999	171	7.2%	1,693	7.9%	4,456	8.0%
\$25,000 - \$34,999	156	6.6%	1,682	7.9%	4,734	8.5%
\$35,000 - \$49,999	251	10.6%	2,551	12.0%	6,864	12.4%
\$50,000 - \$74,999	472	19.9%	3,849	18.0%	9,984	18.0%
\$75,000 - \$99,999	433	18.2%	2,809	13.2%	7,438	13.4%
\$100,000 - \$149,999	411	17.3%	3,695	17.3%	9,882	17.8%
\$150,000 - \$199,999	221	9.3%	1,609	7.5%	3,952	7.1%
\$200,000+	102	4.3%	1,690	7.9%	4,106	7.4%
Median Household Income	\$73,531		\$67,659		\$67,354	
Average Household Income	\$87,545		\$92,951		\$91,458	
Per Capita Income	\$36,265		\$38,875		\$37,477	

2022 Households by Income	1 mile		3 miles		5 miles	
	Number	Percent	Number	Percent	Number	Percent
<\$15,000	163	6.2%	1,760	7.5%	3,953	6.6%
\$15,000 - \$24,999	164	6.2%	1,602	6.8%	4,123	6.8%
\$25,000 - \$34,999	140	5.3%	1,514	6.5%	4,192	7.0%
\$35,000 - \$49,999	229	8.7%	2,316	9.9%	6,129	10.2%
\$50,000 - \$74,999	523	19.8%	4,309	18.4%	11,095	18.4%
\$75,000 - \$99,999	523	19.8%	3,538	15.1%	9,360	15.5%
\$100,000 - \$149,999	492	18.6%	4,470	19.1%	11,741	19.5%
\$150,000 - \$199,999	272	10.3%	1,899	8.1%	4,664	7.7%
\$200,000+	134	5.1%	2,028	8.7%	4,948	8.2%
Median Household Income	\$78,548		\$76,134		\$76,201	
Average Household Income	\$98,046		\$103,711		\$102,465	
Per Capita Income	\$40,421		\$43,318		\$41,908	

**Data Note:** Income is expressed in current dollars.

**Source:** U.S. Census Bureau, Census 2010 Summary File 1. Esri forecasts for 2017 and 2022.



# Demographic and Income Comparison Profile

242 Adley Way, Greenville, South Carolina, 29607  
Rings: 1, 3, 5 mile radii

For Reference Use Only

Latitude: 34.81714

Longitude: -82.28503

2010 Population by Age	1 mile		3 miles		5 miles	
	Number	Percent	Number	Percent	Number	Percent
Age 0 - 4	323	7.0%	2,589	6.0%	7,633	6.4%
Age 5 - 9	338	7.3%	2,869	6.6%	8,339	7.0%
Age 10 - 14	332	7.2%	3,128	7.2%	8,672	7.2%
Age 15 - 19	281	6.1%	2,766	6.4%	7,623	6.4%
Age 20 - 24	233	5.0%	2,260	5.2%	6,821	5.7%
Age 25 - 34	698	15.1%	5,598	13.0%	15,935	13.3%
Age 35 - 44	805	17.4%	6,412	14.8%	17,831	14.9%
Age 45 - 54	613	13.2%	6,468	15.0%	17,847	14.9%
Age 55 - 64	502	10.8%	5,031	11.6%	13,955	11.7%
Age 65 - 74	290	6.3%	3,157	7.3%	8,466	7.1%
Age 75 - 84	140	3.0%	1,865	4.3%	4,534	3.8%
Age 85+	79	1.7%	1,046	2.4%	2,077	1.7%

2017 Population by Age	1 mile		3 miles		5 miles	
	Number	Percent	Number	Percent	Number	Percent
Age 0 - 4	372	6.3%	2,789	5.5%	7,900	5.8%
Age 5 - 9	401	6.8%	3,040	6.0%	8,654	6.4%
Age 10 - 14	412	7.0%	3,291	6.5%	9,162	6.7%
Age 15 - 19	362	6.1%	3,156	6.2%	8,439	6.2%
Age 20 - 24	328	5.6%	2,968	5.9%	8,150	6.0%
Age 25 - 34	769	13.0%	6,404	12.6%	18,158	13.4%
Age 35 - 44	909	15.4%	6,661	13.1%	18,116	13.3%
Age 45 - 54	850	14.4%	7,213	14.2%	19,256	14.2%
Age 55 - 64	678	11.5%	6,568	13.0%	17,097	12.6%
Age 65 - 74	488	8.3%	4,732	9.3%	12,179	9.0%
Age 75 - 84	228	3.9%	2,514	5.0%	6,115	4.5%
Age 85+	100	1.7%	1,349	2.7%	2,681	2.0%

2022 Population by Age	1 mile		3 miles		5 miles	
	Number	Percent	Number	Percent	Number	Percent
Age 0 - 4	397	6.0%	3,004	5.4%	8,413	5.7%
Age 5 - 9	416	6.3%	3,164	5.7%	8,910	6.0%
Age 10 - 14	453	6.9%	3,462	6.2%	9,595	6.5%
Age 15 - 19	412	6.3%	3,286	5.9%	8,948	6.1%
Age 20 - 24	346	5.3%	2,999	5.4%	8,073	5.5%
Age 25 - 34	842	12.8%	7,059	12.7%	19,729	13.3%
Age 35 - 44	935	14.2%	7,217	13.0%	19,593	13.3%
Age 45 - 54	963	14.6%	7,466	13.4%	19,670	13.3%
Age 55 - 64	768	11.7%	7,356	13.2%	19,085	12.9%
Age 65 - 74	602	9.2%	5,767	10.4%	14,529	9.8%
Age 75 - 84	328	5.0%	3,352	6.0%	8,134	5.5%
Age 85+	117	1.8%	1,535	2.8%	3,132	2.1%

Source: U.S. Census Bureau, Census 2010 Summary File 1. Esri forecasts for 2017 and 2022.



# Demographic and Income Comparison Profile

242 Adley Way, Greenville, South Carolina, 29607  
Rings: 1, 3, 5 mile radii

For Reference Use Only  
Latitude: 34.81714  
Longitude: -82.28503

2010 Race and Ethnicity	1 mile		3 miles		5 miles	
	Number	Percent	Number	Percent	Number	Percent
White Alone	3,570	77.0%	33,766	78.2%	93,001	77.7%
Black Alone	558	12.0%	5,573	12.9%	16,812	14.0%
American Indian Alone	9	0.2%	105	0.2%	297	0.2%
Asian Alone	300	6.5%	2,117	4.9%	4,857	4.1%
Pacific Islander Alone	3	0.1%	22	0.1%	71	0.1%
Some Other Race Alone	82	1.8%	791	1.8%	2,525	2.1%
Two or More Races	113	2.4%	812	1.9%	2,172	1.8%
Hispanic Origin (Any Race)	275	5.9%	2,304	5.3%	7,538	6.3%

2017 Race and Ethnicity	1 mile		3 miles		5 miles	
	Number	Percent	Number	Percent	Number	Percent
White Alone	4,437	75.2%	39,152	77.2%	104,217	76.7%
Black Alone	734	12.4%	6,599	13.0%	18,977	14.0%
American Indian Alone	13	0.2%	132	0.3%	345	0.3%
Asian Alone	423	7.2%	2,620	5.2%	6,178	4.5%
Pacific Islander Alone	4	0.1%	26	0.1%	88	0.1%
Some Other Race Alone	113	1.9%	1,019	2.0%	3,151	2.3%
Two or More Races	173	2.9%	1,137	2.2%	2,951	2.2%
Hispanic Origin (Any Race)	394	6.7%	3,036	6.0%	9,521	7.0%

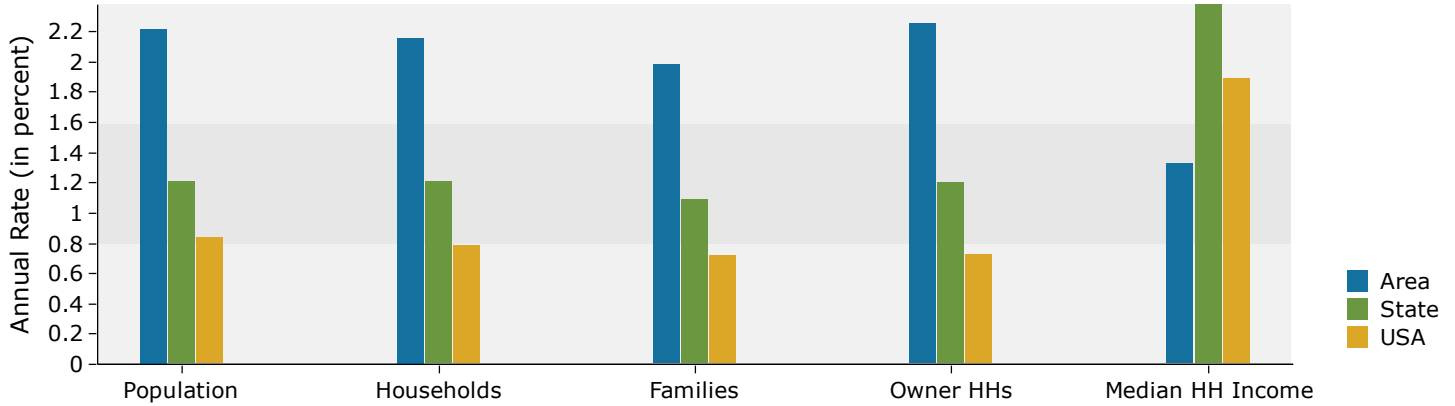
  

2022 Race and Ethnicity	1 mile		3 miles		5 miles	
	Number	Percent	Number	Percent	Number	Percent
White Alone	4,875	74.1%	42,435	76.2%	112,015	75.8%
Black Alone	809	12.3%	7,219	13.0%	20,511	13.9%
American Indian Alone	16	0.2%	153	0.3%	391	0.3%
Asian Alone	517	7.9%	3,168	5.7%	7,401	5.0%
Pacific Islander Alone	6	0.1%	34	0.1%	106	0.1%
Some Other Race Alone	135	2.1%	1,211	2.2%	3,678	2.5%
Two or More Races	222	3.4%	1,448	2.6%	3,710	2.5%
Hispanic Origin (Any Race)	488	7.4%	3,721	6.7%	11,454	7.7%

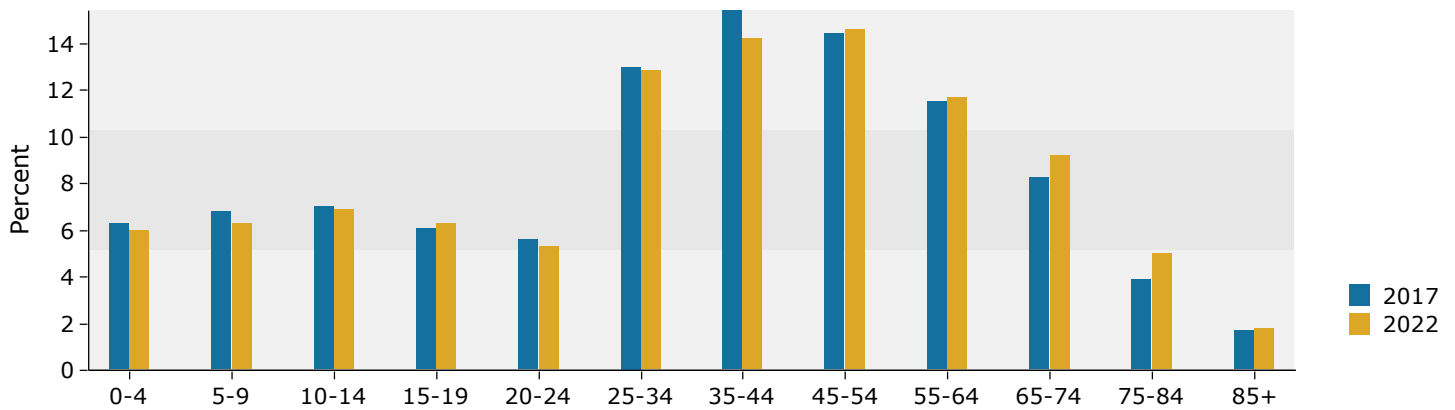
Source: U.S. Census Bureau, Census 2010 Summary File 1. Esri forecasts for 2017 and 2022.

## 1 mile

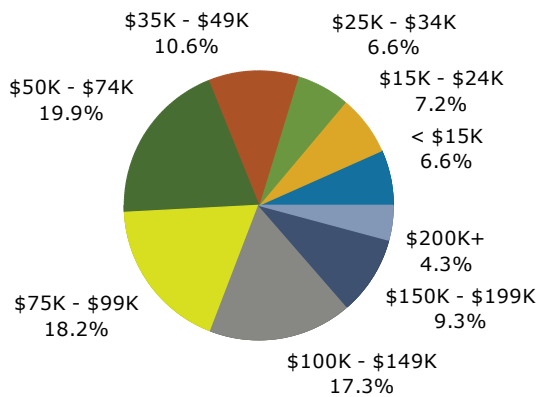
### Trends 2017-2022



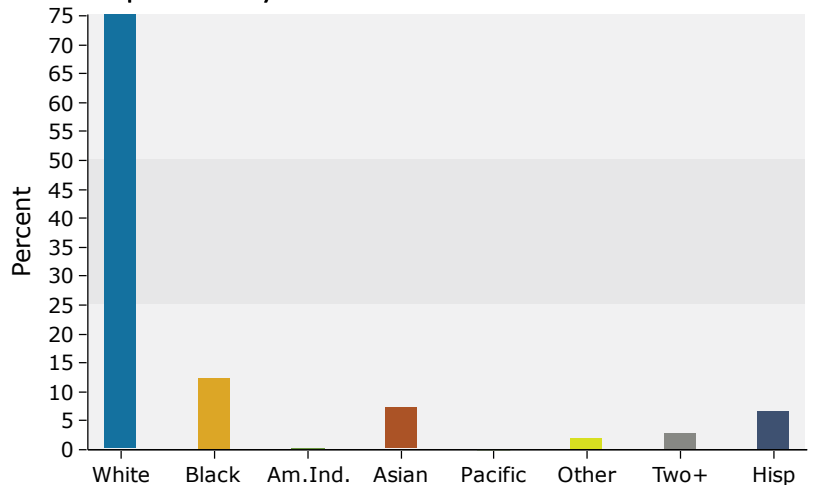
### Population by Age



### 2017 Household Income



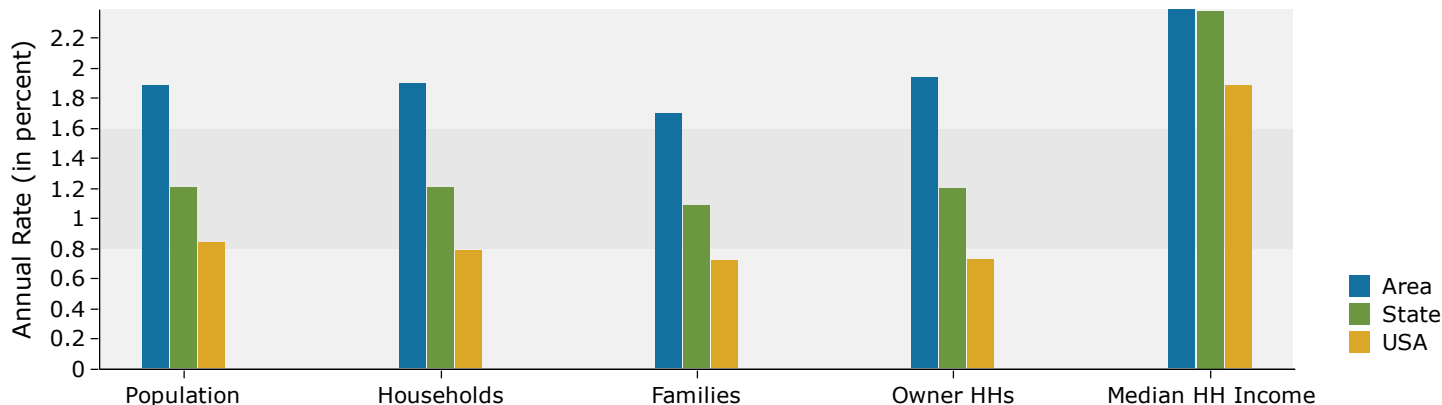
### 2017 Population by Race



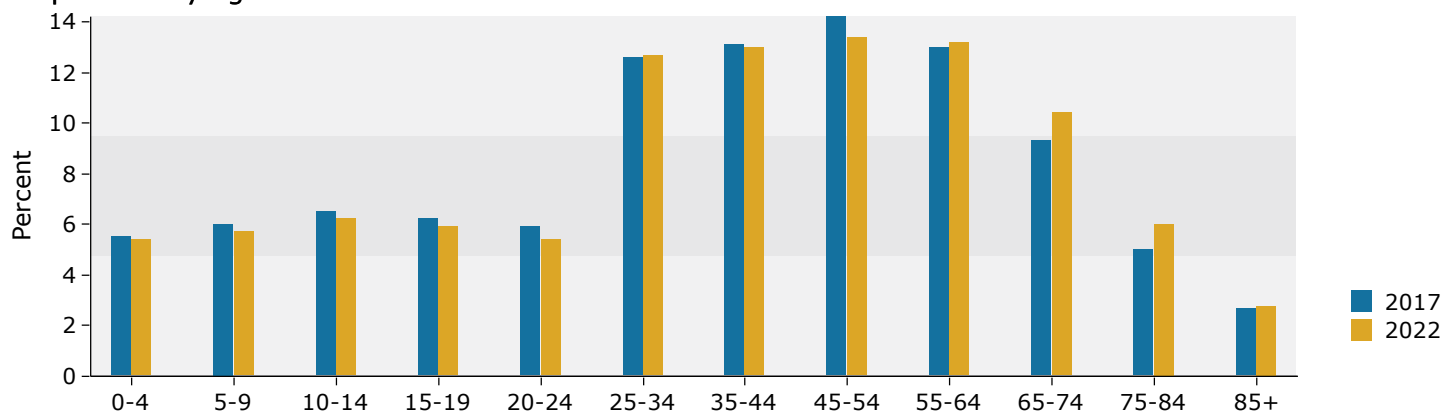
Source: U.S. Census Bureau, Census 2010 Summary File 1. Esri forecasts for 2017 and 2022.

## 3 miles

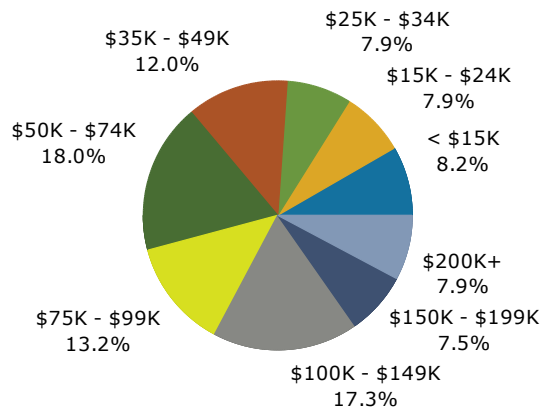
### Trends 2017-2022



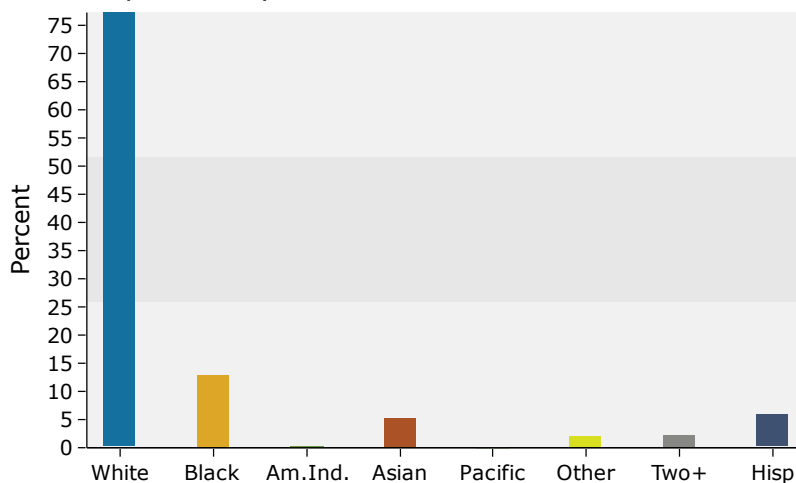
### Population by Age



### 2017 Household Income



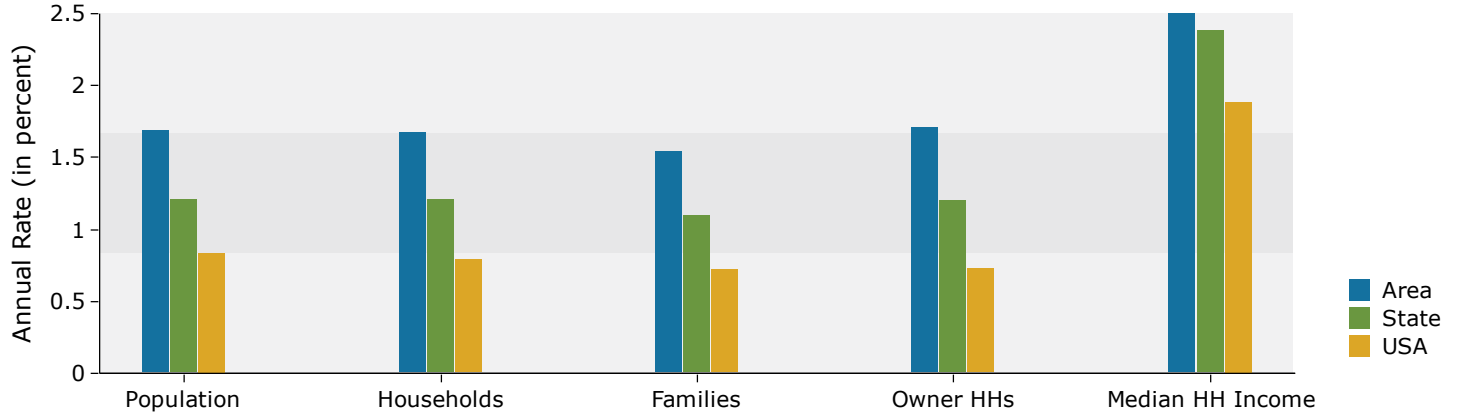
### 2017 Population by Race



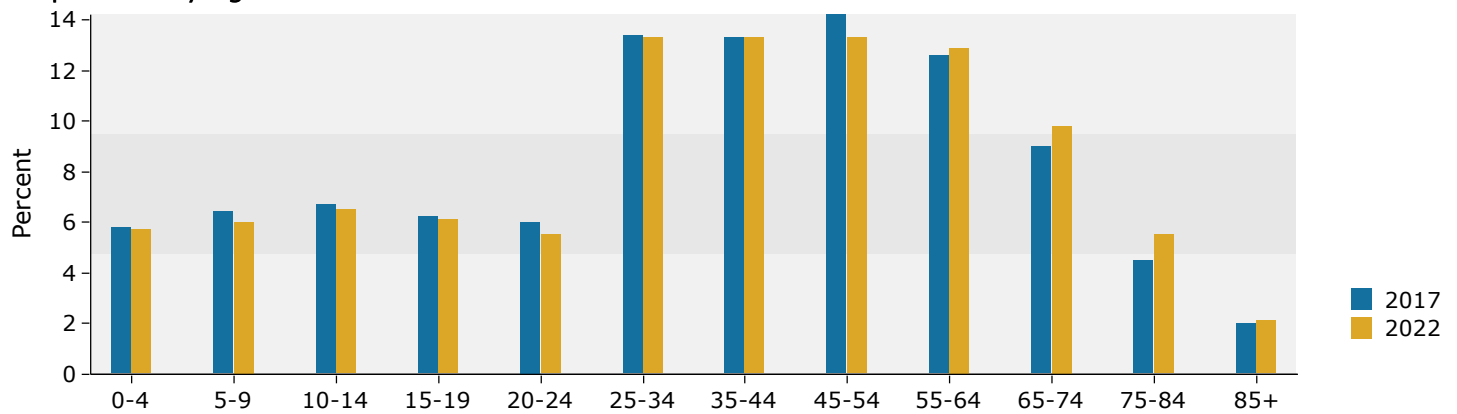
Source: U.S. Census Bureau, Census 2010 Summary File 1. Esri forecasts for 2017 and 2022.

## 5 miles

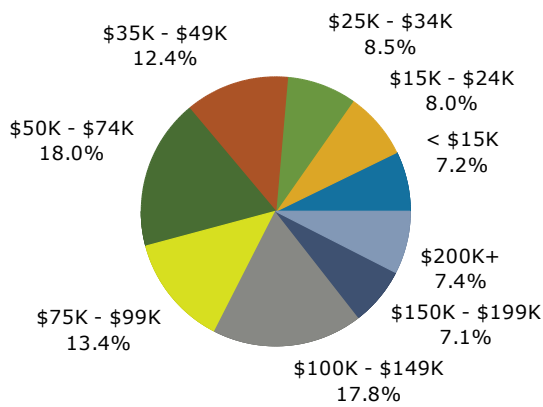
### Trends 2017-2022



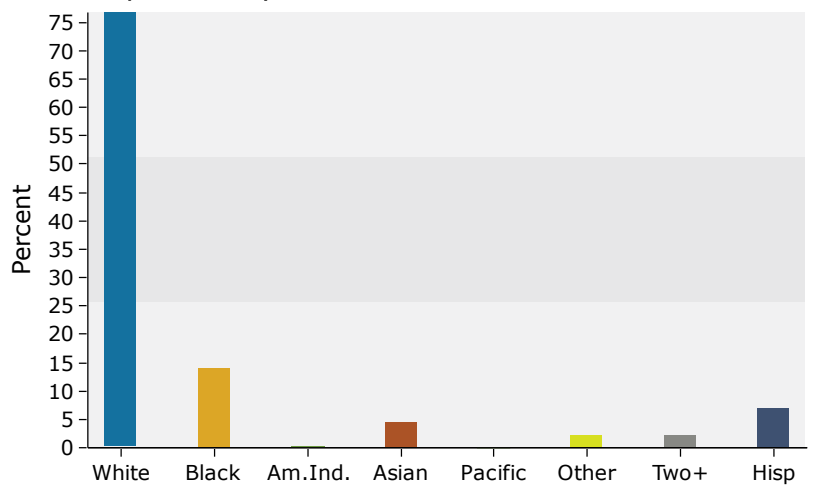
### Population by Age



### 2017 Household Income



### 2017 Population by Race



Source: U.S. Census Bureau, Census 2010 Summary File 1. Esri forecasts for 2017 and 2022.