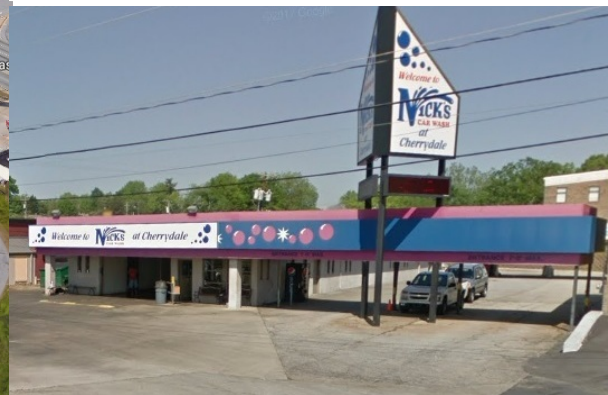
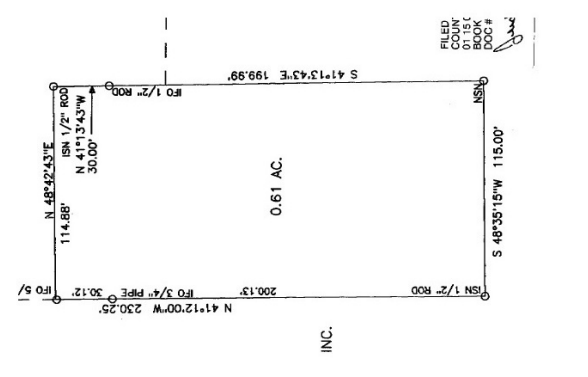


# Car Wash Business with Property

115 State Park Rd | Greenville, SC 29609

**For Sale**  
**\$850,000**



Location is excellent, intersecting N Pleasantburg & Poinsett Hwy & directly across from Cherrydale Shopping Center. It also encompasses the "Poinsett District" project.

- Sale Includes
  - Car Wash Business
  - Building – Approx 4,700± SF
  - Land – .61± Acres
- Zoning C-2 , 115' Frontage
- 34,600 VPD
- Greenville County, Tax Map #[01730201203](#)
- Taxes \$14,374
- [Demographics, Traffic Count](#)
- [Listing Link, Poinsett District Link](#)



**Hope Tz Schmalz**  
Commercial Broker  
HopeTz@JoynerCommercial.com  
864-630-0352  
www.HopeTzcommercial.com



**BERKSHIRE HATHAWAY**  
HomeServices

C. Dan Joyner, REALTORS®

COMMERCIAL DIVISION

24 Vardry Street, Ste. 401 Greenville, SC 29601

©2018 BHH Affiliates, LLC. Real Estate Brokerage Services are offered through the network member franchisees of BHH Affiliates, LLC. Most franchisees are independently owned and operated. Berkshire Hathaway HomeServices and the Berkshire Hathaway HomeServices symbol are registered service marks of HomeServices of America, Inc.® Information not verified or guaranteed. If your property is currently listed with a Broker, this is not intended as a solicitation.