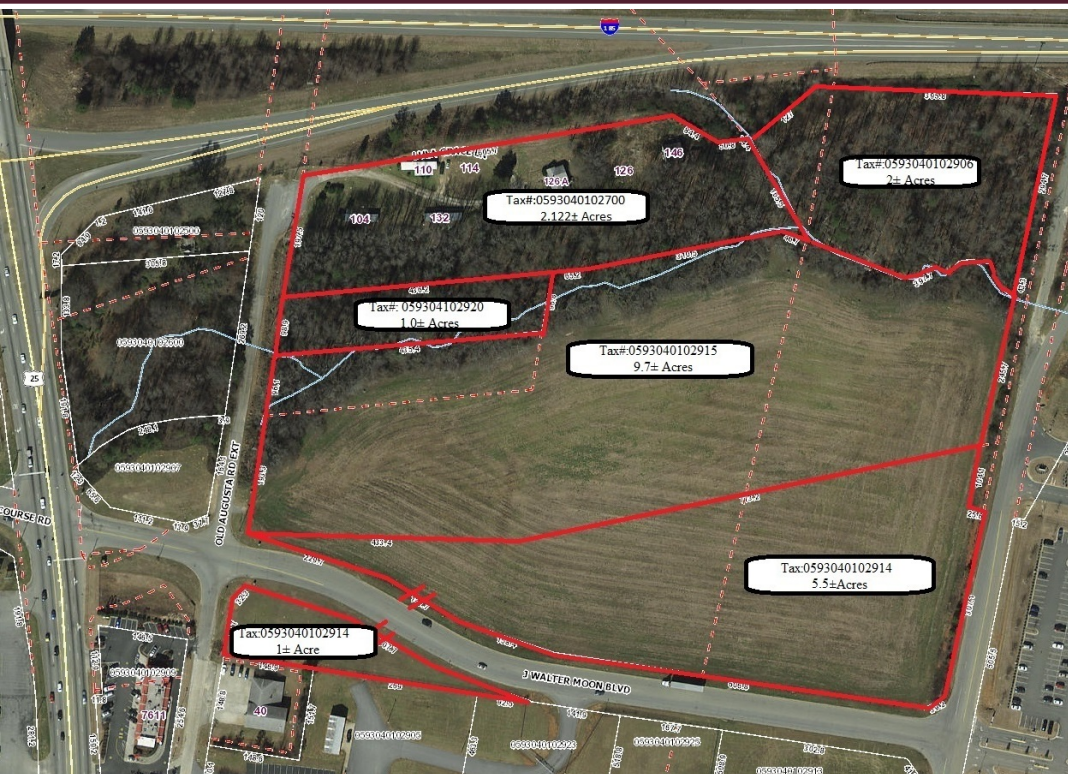


J Walter Moon Blvd & Old Augusta Rd Ext Piedmont, SC 29673

For Sale \$250,000/Acre



Excellent Redevelopment Area
Hwy 25 & I 185 Interchange
21 ± Acres
Sold as One or Individual Sites

Could be Rezoned as Retail or Industrial Use

- Tax Map # [0593040102906](#) - Moon Acres Rd
 - 2 Acres Zoned R-1
 - Tax Map # [0593040102700](#) - 126 Lula Grace Ln
 - 2.122 Acres Zoned R-M20
 - Tax Map # [0593040102920](#) - Old Augusta Rd Ext
 - 1.0 Acres Zoned S1
 - Tax Map # [0593040102915](#) - Old Augusta Rd Ext
 - 9.7 Acres Zoned S1 & R-M20
 - Tax Map # [0593040102914](#) - J Walter Moon Blvd
 - 5.5 Acres Zoned S1
 - 1.0 Acres Zoned S1
- [Listing Link](#)
- Water and Sewer available



Hope Tz Schmalzl
Commercial Broker
HopeTz@joynercommercial.com
864-630-0352
www.JoynerCommercial.com



**BERKSHIRE
HATHAWAY**
HomeServices

C. Dan Joyner, REALTORS®

COMMERCIAL DIVISION

Berkshire Hathaway HomeServices C. Dan Joyner, REALTORS
24 Vardry Street, Ste. 401 Greenville, SC 29601

©2017 BHH Affiliates, LLC. Real Estate Brokerage Services are offered through the network member franchisees of BHH Affiliates, LLC. Most franchisees are independently owned and operated. Berkshire Hathaway HomeServices and the Berkshire Hathaway HomeServices symbol are registered service marks of HomeServices of America, Inc.® Information not verified or guaranteed. If your property is currently listed with a Broker, this is not intended as a solicitation.