



Demographic and Income Comparison Profile

J Walter Moon Blvd, Piedmont, South Carolina, 29673
Rings: 1, 3, 5 mile radii

For Reference Use Only
Latitude: 34.72047
Longitude: -82.38517

	1 mile	3 miles	5 miles
Census 2010 Summary			
Population	1,231	8,511	42,523
Households	471	3,252	15,917
Families	338	2,323	11,492
Average Household Size	2.61	2.62	2.65
Owner Occupied Housing Units	302	2,284	11,293
Renter Occupied Housing Units	169	968	4,624
Median Age	34.9	35.9	35.5
2016 Summary			
Population	1,276	9,340	47,001
Households	483	3,518	17,309
Families	343	2,479	12,360
Average Household Size	2.64	2.65	2.70
Owner Occupied Housing Units	299	2,403	11,984
Renter Occupied Housing Units	184	1,115	5,324
Median Age	35.8	37.1	36.6
Median Household Income	\$52,559	\$47,402	\$45,060
Average Household Income	\$66,029	\$61,319	\$60,025
2021 Summary			
Population	1,327	10,125	51,197
Households	501	3,792	18,732
Families	354	2,652	13,302
Average Household Size	2.65	2.67	2.72
Owner Occupied Housing Units	310	2,587	12,948
Renter Occupied Housing Units	191	1,205	5,784
Median Age	35.9	38.0	37.6
Median Household Income	\$57,070	\$51,392	\$49,803
Average Household Income	\$73,424	\$67,332	\$65,353
Trends: 2016-2021 Annual Rate			
Population	0.79%	1.63%	1.72%
Households	0.73%	1.51%	1.59%
Families	0.63%	1.36%	1.48%
Owner Households	0.73%	1.49%	1.56%
Median Household Income	1.66%	1.63%	2.02%

Source: U.S. Census Bureau, Census 2010 Summary File 1. Esri forecasts for 2016 and 2021.



Demographic and Income Comparison Profile

J Walter Moon Blvd, Piedmont, South Carolina, 29673
Rings: 1, 3, 5 mile radii

For Reference Use Only

Latitude: 34.72047

Longitude: -82.38517

2016 Households by Income	1 mile		3 miles		5 miles	
	Number	Percent	Number	Percent	Number	Percent
<\$15,000	51	10.6%	444	12.6%	2,487	14.4%
\$15,000 - \$24,999	38	7.9%	423	12.0%	2,379	13.7%
\$25,000 - \$34,999	35	7.2%	347	9.9%	1,894	10.9%
\$35,000 - \$49,999	97	20.1%	626	17.8%	2,572	14.9%
\$50,000 - \$74,999	122	25.3%	733	20.8%	3,299	19.1%
\$75,000 - \$99,999	66	13.7%	448	12.7%	2,187	12.6%
\$100,000 - \$149,999	50	10.4%	304	8.6%	1,545	8.9%
\$150,000 - \$199,999	8	1.7%	112	3.2%	544	3.1%
\$200,000+	14	2.9%	80	2.3%	402	2.3%
Median Household Income	\$52,559		\$47,402		\$45,060	
Average Household Income	\$66,029		\$61,319		\$60,025	
Per Capita Income	\$24,967		\$22,926		\$22,159	

2021 Households by Income	1 mile		3 miles		5 miles	
	Number	Percent	Number	Percent	Number	Percent
<\$15,000	53	10.6%	482	12.7%	2,703	14.4%
\$15,000 - \$24,999	46	9.2%	528	13.9%	2,934	15.7%
\$25,000 - \$34,999	29	5.8%	293	7.7%	1,590	8.5%
\$35,000 - \$49,999	75	15.0%	530	14.0%	2,161	11.5%
\$50,000 - \$74,999	123	24.6%	755	19.9%	3,508	18.7%
\$75,000 - \$99,999	75	15.0%	521	13.7%	2,530	13.5%
\$100,000 - \$149,999	70	14.0%	424	11.2%	2,081	11.1%
\$150,000 - \$199,999	12	2.4%	158	4.2%	728	3.9%
\$200,000+	18	3.6%	102	2.7%	498	2.7%
Median Household Income	\$57,070		\$51,392		\$49,803	
Average Household Income	\$73,424		\$67,332		\$65,353	
Per Capita Income	\$27,614		\$25,020		\$23,940	

Data Note: Income is expressed in current dollars.

Source: U.S. Census Bureau, Census 2010 Summary File 1. Esri forecasts for 2016 and 2021.



Demographic and Income Comparison Profile

J Walter Moon Blvd, Piedmont, South Carolina, 29673
 Rings: 1, 3, 5 mile radii

For Reference Use Only
 Latitude: 34.72047
 Longitude: -82.38517

2010 Population by Age	1 mile		3 miles		5 miles	
	Number	Percent	Number	Percent	Number	Percent
Age 0 - 4	94	7.6%	644	7.6%	3,374	7.9%
Age 5 - 9	84	6.8%	594	7.0%	3,055	7.2%
Age 10 - 14	92	7.5%	629	7.4%	3,020	7.1%
Age 15 - 19	93	7.5%	585	6.9%	2,898	6.8%
Age 20 - 24	90	7.3%	530	6.2%	2,558	6.0%
Age 25 - 34	163	13.2%	1,163	13.7%	6,019	14.2%
Age 35 - 44	171	13.9%	1,221	14.3%	6,263	14.7%
Age 45 - 54	175	14.2%	1,252	14.7%	6,219	14.6%
Age 55 - 64	141	11.4%	1,002	11.8%	4,809	11.3%
Age 65 - 74	81	6.6%	578	6.8%	2,752	6.5%
Age 75 - 84	34	2.8%	243	2.9%	1,203	2.8%
Age 85+	12	1.0%	72	0.8%	353	0.8%

2016 Population by Age	1 mile		3 miles		5 miles	
	Number	Percent	Number	Percent	Number	Percent
Age 0 - 4	93	7.3%	662	7.1%	3,452	7.3%
Age 5 - 9	94	7.4%	676	7.2%	3,542	7.5%
Age 10 - 14	84	6.6%	630	6.7%	3,275	7.0%
Age 15 - 19	78	6.1%	573	6.1%	2,864	6.1%
Age 20 - 24	79	6.2%	549	5.9%	2,753	5.9%
Age 25 - 34	197	15.4%	1,311	14.0%	6,522	13.9%
Age 35 - 44	177	13.9%	1,290	13.8%	6,671	14.2%
Age 45 - 54	159	12.5%	1,253	13.4%	6,493	13.8%
Age 55 - 64	156	12.2%	1,183	12.7%	5,653	12.0%
Age 65 - 74	105	8.2%	826	8.8%	3,853	8.2%
Age 75 - 84	43	3.4%	307	3.3%	1,502	3.2%
Age 85+	11	0.9%	81	0.9%	422	0.9%

2021 Population by Age	1 mile		3 miles		5 miles	
	Number	Percent	Number	Percent	Number	Percent
Age 0 - 4	95	7.2%	686	6.8%	3,596	7.0%
Age 5 - 9	98	7.4%	718	7.1%	3,712	7.3%
Age 10 - 14	100	7.5%	745	7.4%	3,836	7.5%
Age 15 - 19	78	5.9%	627	6.2%	3,283	6.4%
Age 20 - 24	63	4.7%	516	5.1%	2,628	5.1%
Age 25 - 34	212	16.0%	1,335	13.2%	6,626	12.9%
Age 35 - 44	185	13.9%	1,402	13.8%	7,285	14.2%
Age 45 - 54	157	11.8%	1,302	12.9%	6,683	13.1%
Age 55 - 64	151	11.4%	1,280	12.6%	6,314	12.3%
Age 65 - 74	121	9.1%	974	9.6%	4,655	9.1%
Age 75 - 84	53	4.0%	436	4.3%	2,062	4.0%
Age 85+	14	1.1%	102	1.0%	517	1.0%

Source: U.S. Census Bureau, Census 2010 Summary File 1. Esri forecasts for 2016 and 2021.



Demographic and Income Comparison Profile

J Walter Moon Blvd, Piedmont, South Carolina, 29673
 Rings: 1, 3, 5 mile radii

For Reference Use Only

Latitude: 34.72047

Longitude: -82.38517

2010 Race and Ethnicity	1 mile		3 miles		5 miles	
	Number	Percent	Number	Percent	Number	Percent
White Alone	677	55.0%	4,763	56.0%	23,697	55.7%
Black Alone	494	40.1%	3,191	37.5%	15,544	36.6%
American Indian Alone	4	0.3%	28	0.3%	148	0.3%
Asian Alone	8	0.6%	53	0.6%	299	0.7%
Pacific Islander Alone	0	0.0%	2	0.0%	28	0.1%
Some Other Race Alone	10	0.8%	269	3.2%	1,889	4.4%
Two or More Races	38	3.1%	206	2.4%	918	2.2%
Hispanic Origin (Any Race)	29	2.4%	547	6.4%	3,640	8.6%

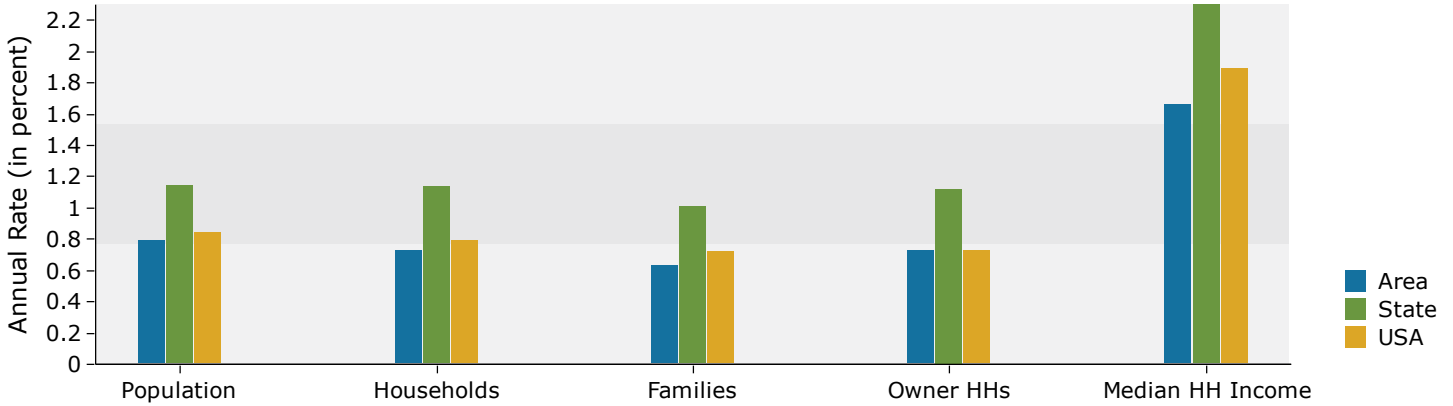
2016 Race and Ethnicity	1 mile		3 miles		5 miles	
	Number	Percent	Number	Percent	Number	Percent
White Alone	687	53.8%	5,115	54.8%	25,710	54.7%
Black Alone	516	40.4%	3,520	37.7%	17,123	36.4%
American Indian Alone	5	0.4%	30	0.3%	163	0.3%
Asian Alone	9	0.7%	66	0.7%	383	0.8%
Pacific Islander Alone	0	0.0%	2	0.0%	34	0.1%
Some Other Race Alone	12	0.9%	335	3.6%	2,363	5.0%
Two or More Races	47	3.7%	271	2.9%	1,225	2.6%
Hispanic Origin (Any Race)	34	2.7%	688	7.4%	4,617	9.8%

2021 Race and Ethnicity	1 mile		3 miles		5 miles	
	Number	Percent	Number	Percent	Number	Percent
White Alone	700	52.8%	5,437	53.7%	27,525	53.8%
Black Alone	539	40.6%	3,825	37.8%	18,576	36.3%
American Indian Alone	5	0.4%	34	0.3%	179	0.3%
Asian Alone	11	0.8%	81	0.8%	473	0.9%
Pacific Islander Alone	0	0.0%	3	0.0%	41	0.1%
Some Other Race Alone	14	1.1%	400	3.9%	2,827	5.5%
Two or More Races	58	4.4%	347	3.4%	1,575	3.1%
Hispanic Origin (Any Race)	41	3.1%	844	8.3%	5,667	11.1%

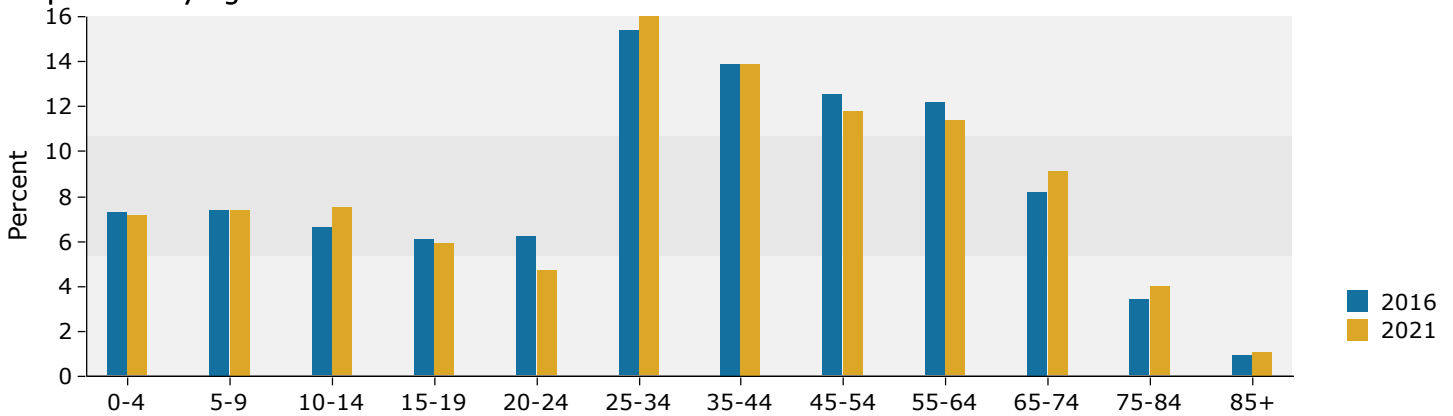
Source: U.S. Census Bureau, Census 2010 Summary File 1. Esri forecasts for 2016 and 2021.

1 mile

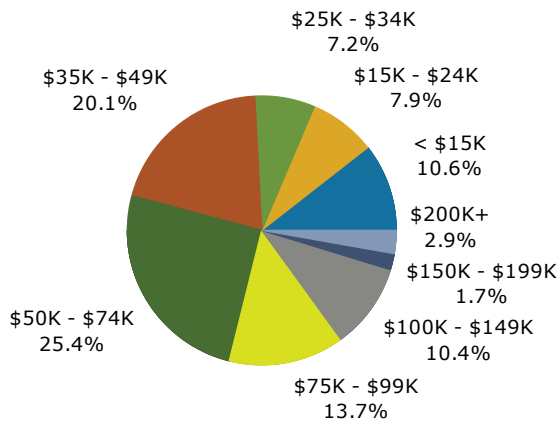
Trends 2016-2021



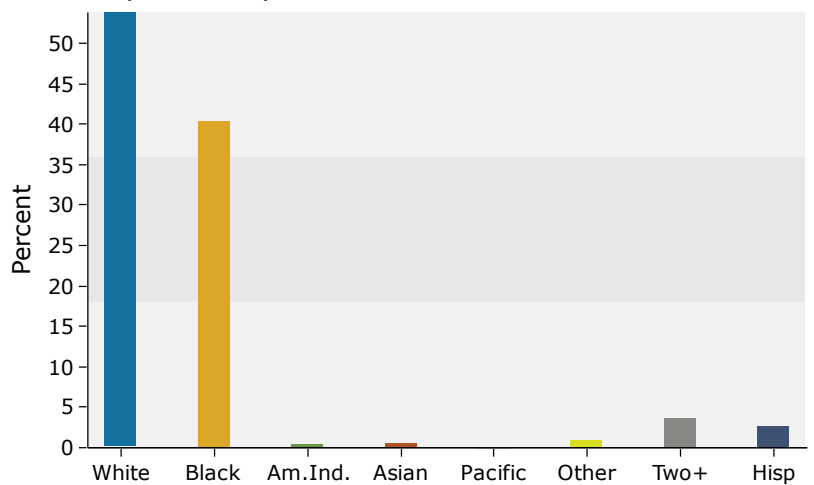
Population by Age



2016 Household Income



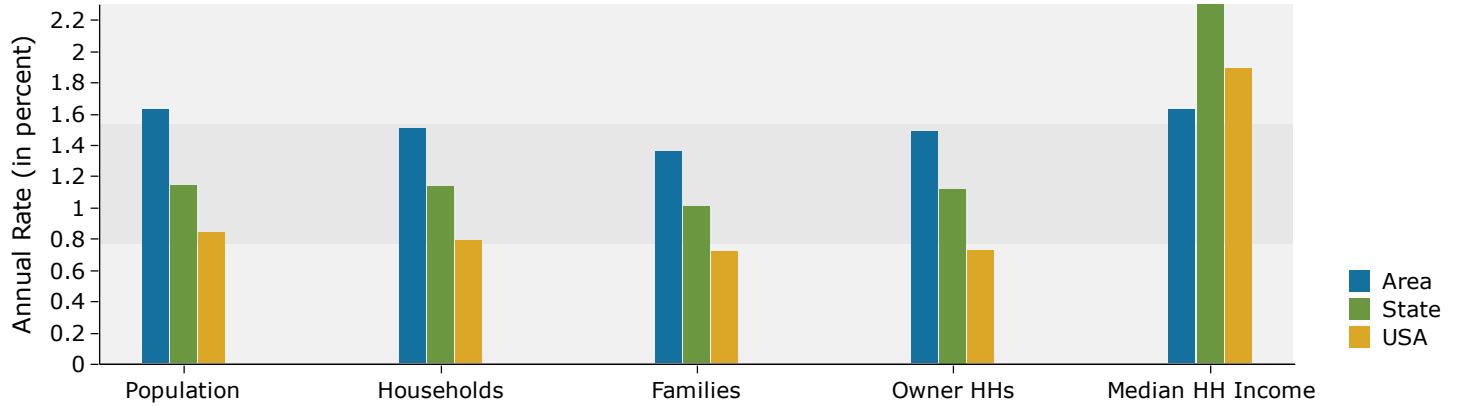
2016 Population by Race



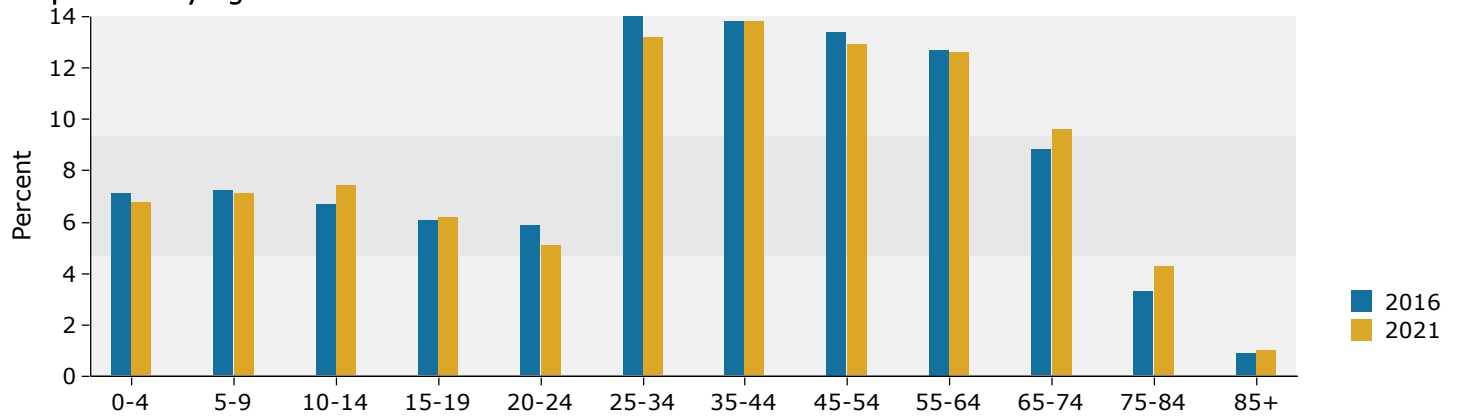
Source: U.S. Census Bureau, Census 2010 Summary File 1. Esri forecasts for 2016 and 2021.

3 miles

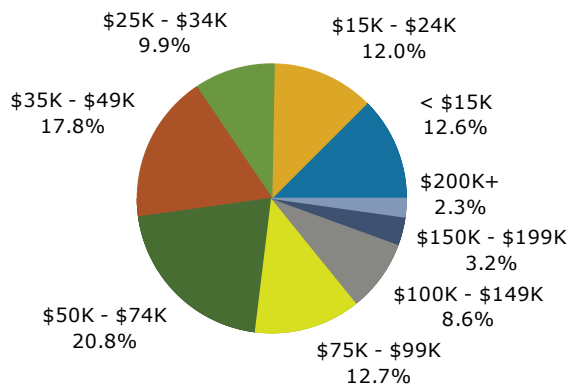
Trends 2016-2021



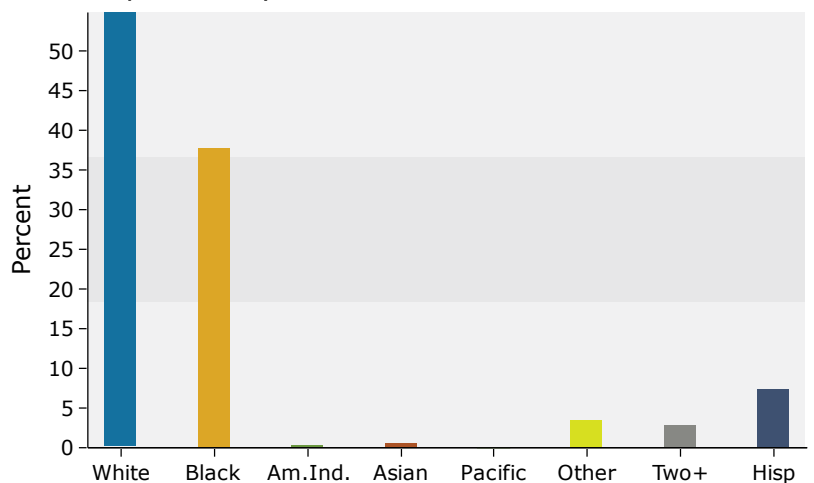
Population by Age



2016 Household Income



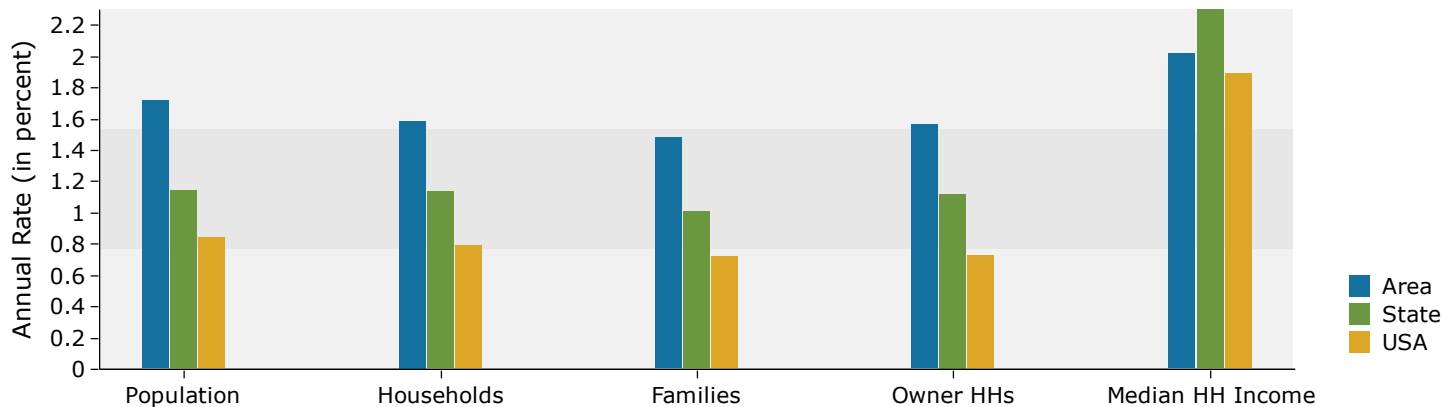
2016 Population by Race



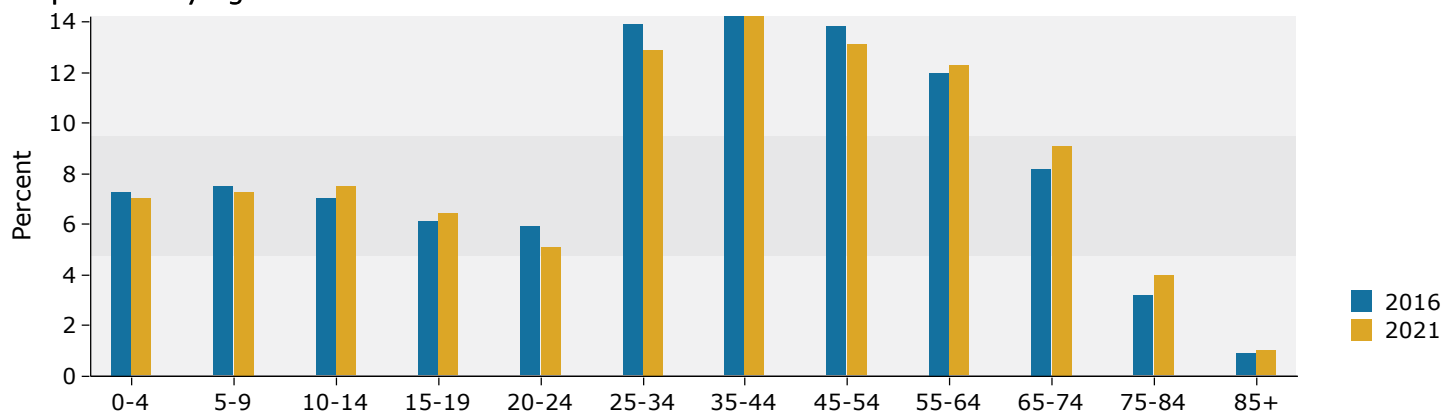
Source: U.S. Census Bureau, Census 2010 Summary File 1. Esri forecasts for 2016 and 2021.

5 miles

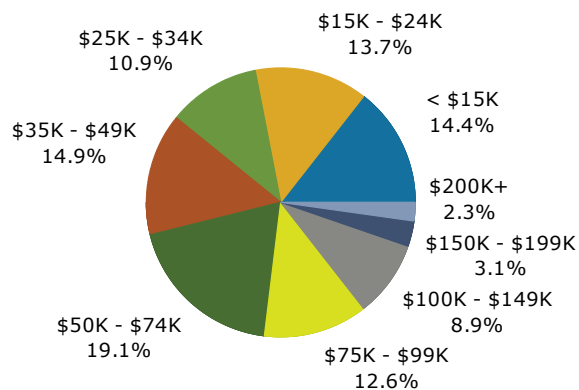
Trends 2016-2021



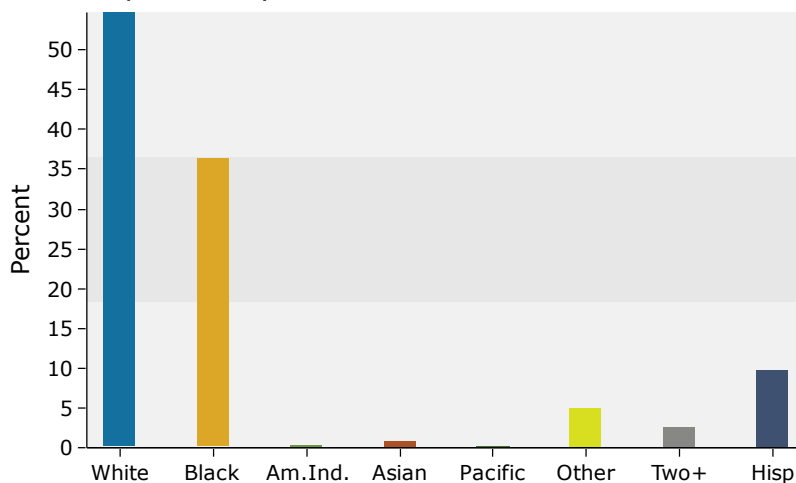
Population by Age



2016 Household Income



2016 Population by Race



Source: U.S. Census Bureau, Census 2010 Summary File 1. Esri forecasts for 2016 and 2021.