



Demographic and Income Comparison Profile

2956 New Easley Bridge Hwy, Greenville, South Carolina,
 2956 New Easley Bridge Hwy, Greenville, South Carolina, 29611
 Ring Bands: 0-1, 1-3, 3-5 mile radii

Prepared by Esri
 Latitude: 34.83331
 Longitude: -82.47126

	0 - 1 mile	1 - 3 mile	3 - 5 mile
Census 2010 Summary			
Population	1,996	31,013	57,955
Households	777	11,781	24,067
Families	557	7,957	14,621
Average Household Size	2.56	2.62	2.36
Owner Occupied Housing Units	531	6,969	13,981
Renter Occupied Housing Units	246	4,812	10,086
Median Age	35.2	36.5	37.9
2016 Summary			
Population	2,146	32,984	63,021
Households	820	12,321	25,869
Families	579	8,207	15,398
Average Household Size	2.61	2.66	2.39
Owner Occupied Housing Units	540	6,982	14,318
Renter Occupied Housing Units	280	5,339	11,550
Median Age	36.2	37.3	38.9
Median Household Income	\$31,135	\$30,462	\$37,049
Average Household Income	\$40,735	\$42,995	\$57,733
2021 Summary			
Population	2,292	34,990	67,751
Households	871	12,984	27,716
Families	611	8,585	16,312
Average Household Size	2.62	2.68	2.40
Owner Occupied Housing Units	582	7,332	15,152
Renter Occupied Housing Units	289	5,652	12,564
Median Age	38.5	38.4	39.7
Median Household Income	\$29,839	\$30,090	\$38,257
Average Household Income	\$41,847	\$45,410	\$62,259
Trends: 2016-2021 Annual Rate			
Population	1.33%	1.19%	1.46%
Households	1.21%	1.05%	1.39%
Families	1.08%	0.90%	1.16%
Owner Households	1.51%	0.98%	1.14%
Median Household Income	-0.85%	-0.25%	0.64%

Source: U.S. Census Bureau, Census 2010 Summary File 1. Esri forecasts for 2016 and 2021.



Demographic and Income Comparison Profile

2956 New Easley Bridge Hwy, Greenville, South Carolina,
 2956 New Easley Bridge Hwy, Greenville, South Carolina, 29611
 Ring Bands: 0-1, 1-3, 3-5 mile radii

Prepared by Esri
 Latitude: 34.83331
 Longitude: -82.47126

2016 Households by Income	0 - 1 mile		1 - 3 mile		3 - 5 mile	
	Number	Percent	Number	Percent	Number	Percent
<\$15,000	174	21.2%	2,884	23.4%	5,080	19.6%
\$15,000 - \$24,999	120	14.6%	2,213	18.0%	4,102	15.9%
\$25,000 - \$34,999	167	20.4%	1,715	13.9%	3,103	12.0%
\$35,000 - \$49,999	145	17.7%	1,767	14.3%	3,592	13.9%
\$50,000 - \$74,999	123	15.0%	2,046	16.6%	3,860	14.9%
\$75,000 - \$99,999	43	5.2%	837	6.8%	2,405	9.3%
\$100,000 - \$149,999	37	4.5%	579	4.7%	2,031	7.9%
\$150,000 - \$199,999	7	0.9%	170	1.4%	853	3.3%
\$200,000+	4	0.5%	109	0.9%	843	3.3%
Median Household Income	\$31,135		\$30,462		\$37,049	
Average Household Income	\$40,735		\$42,995		\$57,733	
Per Capita Income	\$14,781		\$16,378		\$23,978	

2021 Households by Income	0 - 1 mile		1 - 3 mile		3 - 5 mile	
	Number	Percent	Number	Percent	Number	Percent
<\$15,000	190	21.8%	3,091	23.8%	5,496	19.8%
\$15,000 - \$24,999	151	17.3%	2,604	20.1%	4,980	18.0%
\$25,000 - \$34,999	166	19.1%	1,383	10.7%	2,484	9.0%
\$35,000 - \$49,999	143	16.4%	1,774	13.7%	3,283	11.8%
\$50,000 - \$74,999	113	13.0%	2,120	16.3%	4,105	14.8%
\$75,000 - \$99,999	49	5.6%	940	7.2%	2,668	9.6%
\$100,000 - \$149,999	46	5.3%	718	5.5%	2,579	9.3%
\$150,000 - \$199,999	9	1.0%	230	1.8%	1,130	4.1%
\$200,000+	5	0.6%	125	1.0%	991	3.6%
Median Household Income	\$29,839		\$30,090		\$38,257	
Average Household Income	\$41,847		\$45,410		\$62,259	
Per Capita Income	\$15,064		\$17,175		\$25,694	

Data Note: Income is expressed in current dollars.

Source: U.S. Census Bureau, Census 2010 Summary File 1. Esri forecasts for 2016 and 2021.



Demographic and Income Comparison Profile

2956 New Easley Bridge Hwy, Greenville, South Carolina,
 2956 New Easley Bridge Hwy, Greenville, South Carolina, 29611
 Ring Bands: 0-1, 1-3, 3-5 mile radii

Prepared by Esri
 Latitude: 34.83331
 Longitude: -82.47126

2010 Population by Age	0 - 1 mile		1 - 3 mile		3 - 5 mile	
	Number	Percent	Number	Percent	Number	Percent
Age 0 - 4	164	8.2%	2,388	7.7%	4,109	7.1%
Age 5 - 9	143	7.2%	2,085	6.7%	3,671	6.3%
Age 10 - 14	141	7.1%	2,098	6.8%	3,417	5.9%
Age 15 - 19	149	7.5%	2,101	6.8%	3,408	5.9%
Age 20 - 24	134	6.7%	2,007	6.5%	3,512	6.1%
Age 25 - 34	262	13.1%	4,231	13.6%	8,486	14.6%
Age 35 - 44	258	12.9%	4,085	13.2%	8,052	13.9%
Age 45 - 54	277	13.9%	4,332	14.0%	8,267	14.3%
Age 55 - 64	221	11.1%	3,594	11.6%	7,074	12.2%
Age 65 - 74	133	6.7%	2,253	7.3%	4,288	7.4%
Age 75 - 84	93	4.7%	1,377	4.4%	2,532	4.4%
Age 85+	21	1.1%	462	1.5%	1,137	2.0%

2016 Population by Age	Number		Percent		Number		Percent	
	Number	Percent	Number	Percent	Number	Percent	Number	Percent
Age 0 - 4	166	7.7%	2,412	7.3%	4,178	6.6%	4,178	6.6%
Age 5 - 9	166	7.7%	2,358	7.1%	4,069	6.5%	4,069	6.5%
Age 10 - 14	146	6.8%	2,161	6.6%	3,820	6.1%	3,820	6.1%
Age 15 - 19	130	6.1%	1,964	6.0%	3,431	5.4%	3,431	5.4%
Age 20 - 24	132	6.1%	2,044	6.2%	3,674	5.8%	3,674	5.8%
Age 25 - 34	304	14.2%	4,578	13.9%	9,029	14.3%	9,029	14.3%
Age 35 - 44	262	12.2%	4,151	12.6%	8,441	13.4%	8,441	13.4%
Age 45 - 54	288	13.4%	4,335	13.1%	8,375	13.3%	8,375	13.3%
Age 55 - 64	252	11.7%	4,122	12.5%	8,251	13.1%	8,251	13.1%
Age 65 - 74	185	8.6%	2,879	8.7%	5,761	9.1%	5,761	9.1%
Age 75 - 84	87	4.1%	1,431	4.3%	2,724	4.3%	2,724	4.3%
Age 85+	29	1.4%	547	1.7%	1,265	2.0%	1,265	2.0%

2021 Population by Age	Number		Percent		Number		Percent	
	Number	Percent	Number	Percent	Number	Percent	Number	Percent
Age 0 - 4	163	7.1%	2,443	7.0%	4,337	6.4%	4,337	6.4%
Age 5 - 9	166	7.2%	2,421	6.9%	4,289	6.3%	4,289	6.3%
Age 10 - 14	170	7.4%	2,496	7.1%	4,378	6.5%	4,378	6.5%
Age 15 - 19	151	6.6%	2,157	6.2%	3,864	5.7%	3,864	5.7%
Age 20 - 24	121	5.3%	1,933	5.5%	3,574	5.3%	3,574	5.3%
Age 25 - 34	272	11.9%	4,486	12.8%	9,065	13.4%	9,065	13.4%
Age 35 - 44	289	12.6%	4,483	12.8%	9,058	13.4%	9,058	13.4%
Age 45 - 54	299	13.0%	4,377	12.5%	8,621	12.7%	8,621	12.7%
Age 55 - 64	293	12.8%	4,430	12.7%	8,861	13.1%	8,861	13.1%
Age 65 - 74	231	10.1%	3,465	9.9%	6,989	10.3%	6,989	10.3%
Age 75 - 84	103	4.5%	1,697	4.8%	3,406	5.0%	3,406	5.0%
Age 85+	35	1.5%	602	1.7%	1,308	1.9%	1,308	1.9%

Source: U.S. Census Bureau, Census 2010 Summary File 1. Esri forecasts for 2016 and 2021.



Demographic and Income Comparison Profile

2956 New Easley Bridge Hwy, Greenville, South Carolina,
 2956 New Easley Bridge Hwy, Greenville, South Carolina, 29611
 Ring Bands: 0-1, 1-3, 3-5 mile radii

Prepared by Esri
 Latitude: 34.83331
 Longitude: -82.47126

2010 Race and Ethnicity	0 - 1 mile		1 - 3 mile		3 - 5 mile	
	Number	Percent	Number	Percent	Number	Percent
White Alone	1,338	67.0%	18,374	59.2%	39,463	68.1%
Black Alone	407	20.4%	8,658	27.9%	12,547	21.6%
American Indian Alone	9	0.5%	139	0.4%	262	0.5%
Asian Alone	9	0.5%	161	0.5%	484	0.8%
Pacific Islander Alone	0	0.0%	4	0.0%	26	0.0%
Some Other Race Alone	185	9.3%	2,973	9.6%	3,966	6.8%
Two or More Races	49	2.5%	703	2.3%	1,207	2.1%
Hispanic Origin (Any Race)	290	14.5%	4,758	15.3%	6,498	11.2%

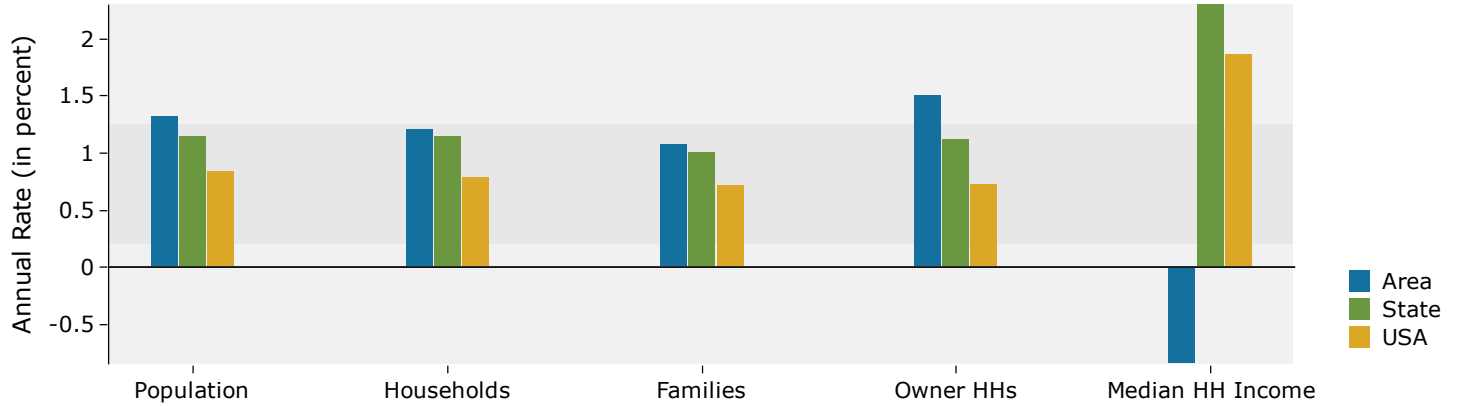
2016 Race and Ethnicity	0 - 1 mile		1 - 3 mile		3 - 5 mile	
	Number	Percent	Number	Percent	Number	Percent
White Alone	1,394	65.0%	19,058	57.8%	41,790	66.3%
Black Alone	439	20.5%	9,041	27.4%	13,798	21.9%
American Indian Alone	9	0.4%	146	0.4%	297	0.5%
Asian Alone	12	0.6%	198	0.6%	618	1.0%
Pacific Islander Alone	0	0.0%	6	0.0%	35	0.1%
Some Other Race Alone	230	10.7%	3,642	11.0%	4,907	7.8%
Two or More Races	62	2.9%	893	2.7%	1,576	2.5%
Hispanic Origin (Any Race)	358	16.7%	5,798	17.6%	8,013	12.7%

2021 Race and Ethnicity	0 - 1 mile		1 - 3 mile		3 - 5 mile	
	Number	Percent	Number	Percent	Number	Percent
White Alone	1,450	63.3%	19,751	56.4%	43,905	64.8%
Black Alone	467	20.4%	9,446	27.0%	14,919	22.0%
American Indian Alone	10	0.4%	154	0.4%	325	0.5%
Asian Alone	14	0.6%	237	0.7%	758	1.1%
Pacific Islander Alone	0	0.0%	7	0.0%	40	0.1%
Some Other Race Alone	274	12.0%	4,293	12.3%	5,813	8.6%
Two or More Races	77	3.4%	1,103	3.2%	1,993	2.9%
Hispanic Origin (Any Race)	430	18.8%	6,894	19.7%	9,598	14.2%

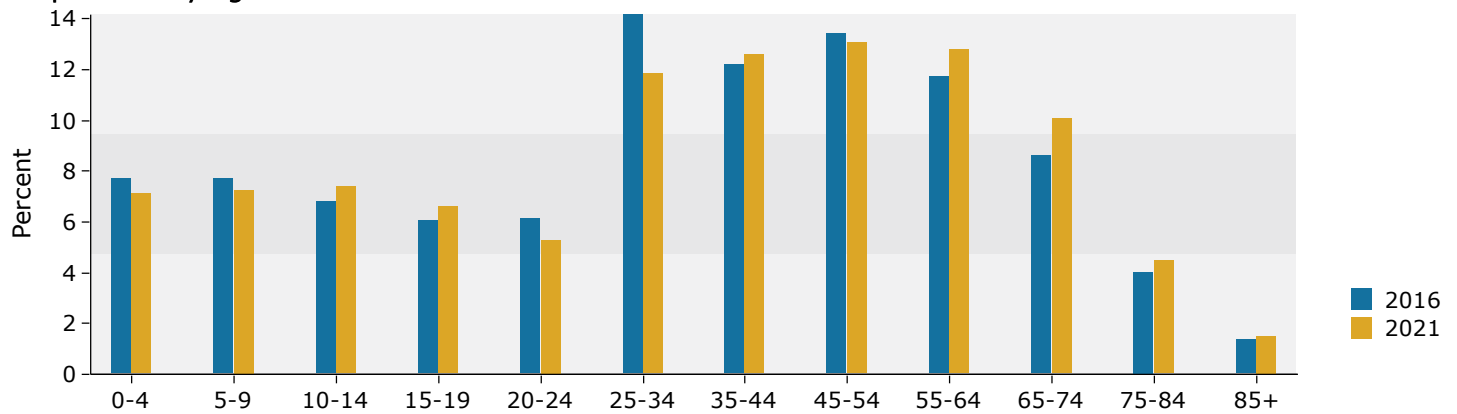
Source: U.S. Census Bureau, Census 2010 Summary File 1. Esri forecasts for 2016 and 2021.

0 - 1 mile

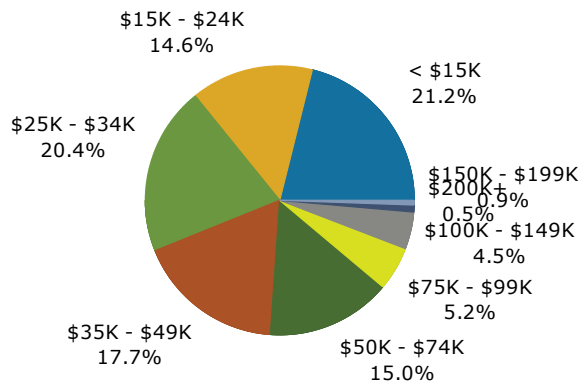
Trends 2016-2021



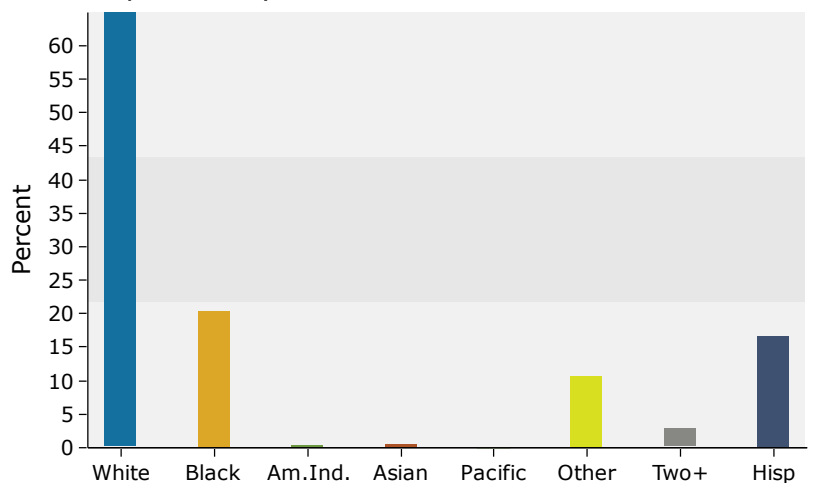
Population by Age



2016 Household Income



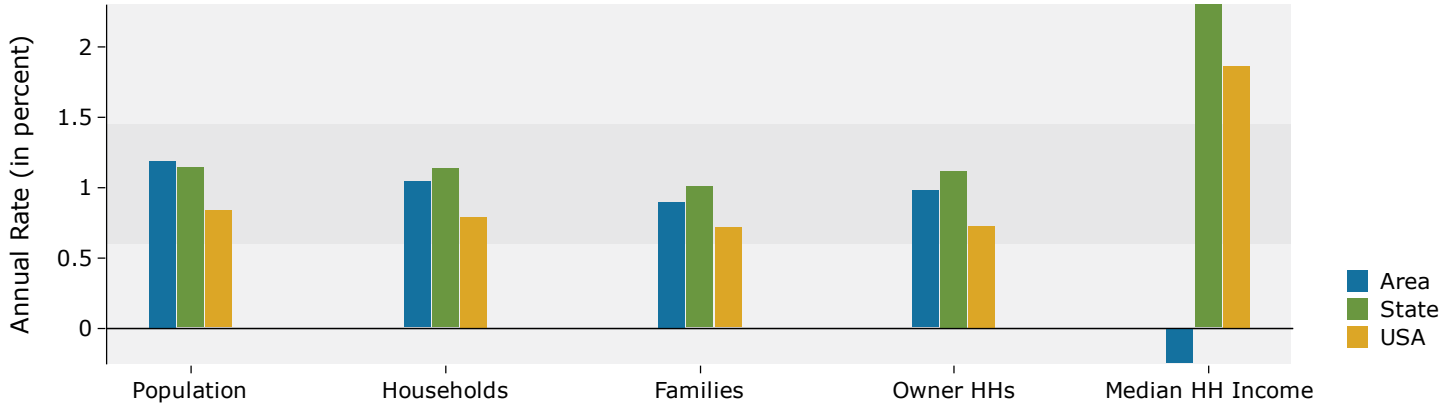
2016 Population by Race



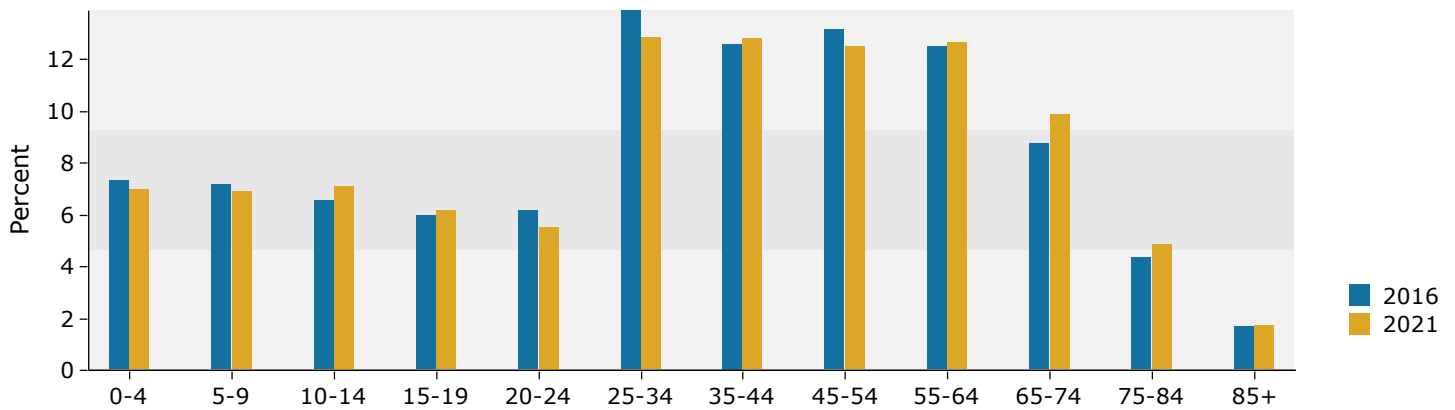
Source: U.S. Census Bureau, Census 2010 Summary File 1. Esri forecasts for 2016 and 2021.

1 - 3 mile

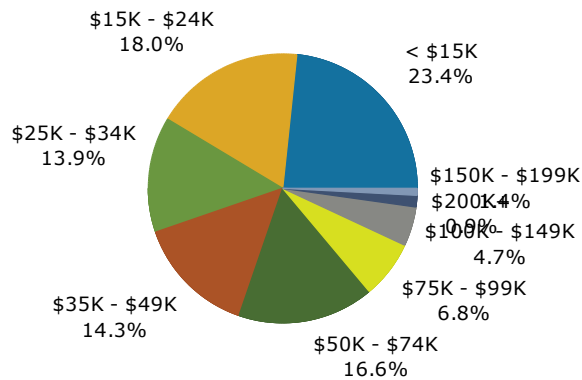
Trends 2016-2021



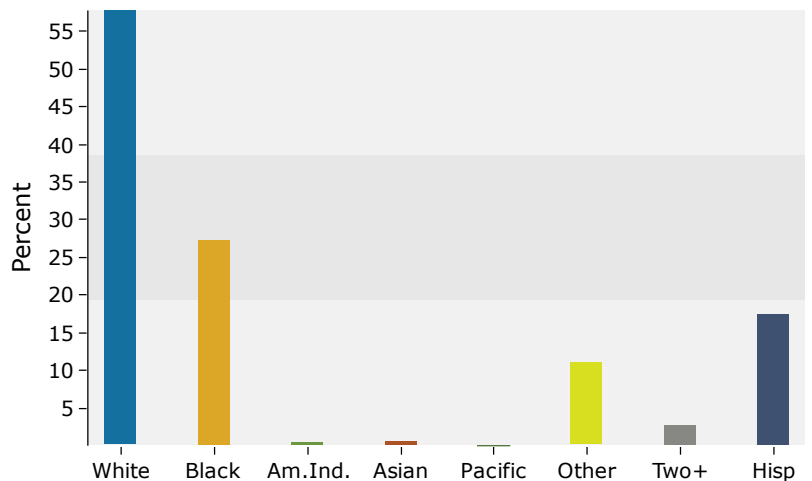
Population by Age



2016 Household Income

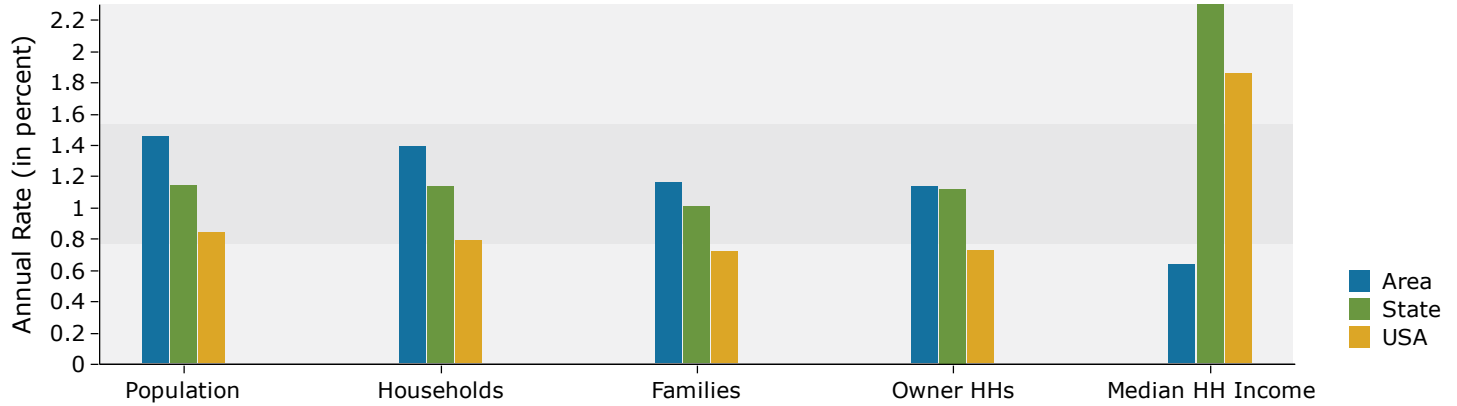


2016 Population by Race

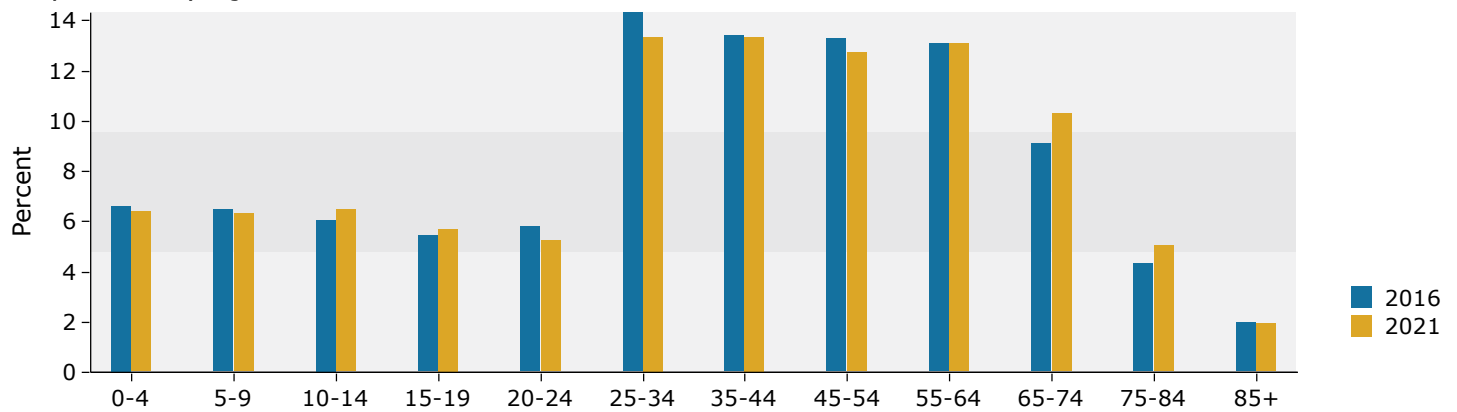


3 - 5 mile

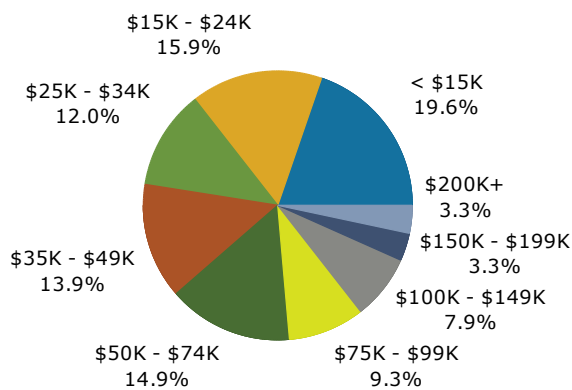
Trends 2016-2021



Population by Age



2016 Household Income



2016 Population by Race

