



Demographic and Income Comparison Profile

2832 Geer Hwy, Marietta, South Carolina, 29661
Rings: 1, 2, 3 mile radii

For Reference Use Only
Latitude: 35.02090
Longitude: -82.50177

	1 mile	2 miles	3 miles
Census 2010 Summary			
Population	1,782	3,739	6,078
Households	665	1,420	2,286
Families	475	1,025	1,667
Average Household Size	2.62	2.58	2.61
Owner Occupied Housing Units	471	1,049	1,743
Renter Occupied Housing Units	194	371	543
Median Age	38.2	38.7	38.9
2016 Summary			
Population	1,785	3,797	6,251
Households	657	1,423	2,319
Families	464	1,015	1,673
Average Household Size	2.66	2.62	2.65
Owner Occupied Housing Units	449	1,022	1,724
Renter Occupied Housing Units	208	401	595
Median Age	39.2	39.9	40.3
Median Household Income	\$40,255	\$39,558	\$38,948
Average Household Income	\$49,675	\$48,716	\$48,500
2021 Summary			
Population	1,821	3,916	6,503
Households	667	1,460	2,401
Families	468	1,036	1,722
Average Household Size	2.67	2.63	2.67
Owner Occupied Housing Units	455	1,048	1,784
Renter Occupied Housing Units	212	413	617
Median Age	40.9	41.5	41.8
Median Household Income	\$40,692	\$39,370	\$38,643
Average Household Income	\$51,689	\$50,907	\$51,101
Trends: 2016-2021 Annual Rate			
Population	0.40%	0.62%	0.79%
Households	0.30%	0.51%	0.70%
Families	0.17%	0.41%	0.58%
Owner Households	0.27%	0.50%	0.69%
Median Household Income	0.22%	-0.10%	-0.16%

Source: U.S. Census Bureau, Census 2010 Summary File 1. Esri forecasts for 2016 and 2021.



Demographic and Income Comparison Profile

2832 Geer Hwy, Marietta, South Carolina, 29661
Rings: 1, 2, 3 mile radii

For Reference Use Only
Latitude: 35.02090
Longitude: -82.50177

2016 Households by Income	1 mile		2 miles		3 miles	
	Number	Percent	Number	Percent	Number	Percent
<\$15,000	123	18.7%	265	18.6%	442	19.1%
\$15,000 - \$24,999	79	12.0%	177	12.4%	289	12.5%
\$25,000 - \$34,999	73	11.1%	163	11.5%	276	11.9%
\$35,000 - \$49,999	122	18.6%	272	19.1%	442	19.1%
\$50,000 - \$74,999	155	23.6%	328	23.0%	510	22.0%
\$75,000 - \$99,999	50	7.6%	109	7.7%	180	7.8%
\$100,000 - \$149,999	39	5.9%	75	5.3%	123	5.3%
\$150,000 - \$199,999	7	1.1%	17	1.2%	30	1.3%
\$200,000+	9	1.4%	16	1.1%	26	1.1%
Median Household Income	\$40,255		\$39,558		\$38,948	
Average Household Income	\$49,675		\$48,716		\$48,500	
Per Capita Income	\$18,879		\$18,537		\$18,359	

2021 Households by Income	1 mile		2 miles		3 miles	
	Number	Percent	Number	Percent	Number	Percent
<\$15,000	128	19.2%	282	19.3%	477	19.9%
\$15,000 - \$24,999	98	14.7%	223	15.3%	366	15.2%
\$25,000 - \$34,999	63	9.4%	145	9.9%	249	10.4%
\$35,000 - \$49,999	98	14.7%	219	15.0%	352	14.7%
\$50,000 - \$74,999	167	25.0%	342	23.4%	526	21.9%
\$75,000 - \$99,999	53	7.9%	121	8.3%	209	8.7%
\$100,000 - \$149,999	41	6.1%	86	5.9%	151	6.3%
\$150,000 - \$199,999	10	1.5%	24	1.6%	42	1.7%
\$200,000+	10	1.5%	18	1.2%	30	1.2%
Median Household Income	\$40,692		\$39,370		\$38,643	
Average Household Income	\$51,689		\$50,907		\$51,101	
Per Capita Income	\$19,504		\$19,221		\$19,202	

Data Note: Income is expressed in current dollars.

Source: U.S. Census Bureau, Census 2010 Summary File 1. Esri forecasts for 2016 and 2021.



Demographic and Income Comparison Profile

2832 Geer Hwy, Marietta, South Carolina, 29661
Rings: 1, 2, 3 mile radii

For Reference Use Only

Latitude: 35.02090
Longitude: -82.50177

2010 Population by Age	1 mile		2 miles		3 miles	
	Number	Percent	Number	Percent	Number	Percent
Age 0 - 4	125	7.0%	255	6.8%	406	6.7%
Age 5 - 9	116	6.5%	238	6.4%	381	6.3%
Age 10 - 14	121	6.8%	247	6.6%	399	6.6%
Age 15 - 19	126	7.1%	267	7.1%	437	7.2%
Age 20 - 24	97	5.4%	200	5.3%	331	5.4%
Age 25 - 34	230	12.9%	478	12.8%	767	12.6%
Age 35 - 44	243	13.6%	500	13.4%	808	13.3%
Age 45 - 54	256	14.4%	549	14.7%	906	14.9%
Age 55 - 64	214	12.0%	475	12.7%	806	13.3%
Age 65 - 74	143	8.0%	306	8.2%	499	8.2%
Age 75 - 84	74	4.2%	156	4.2%	242	4.0%
Age 85+	36	2.0%	68	1.8%	95	1.6%

2016 Population by Age	1 mile		2 miles		3 miles	
	Number	Percent	Number	Percent	Number	Percent
Age 0 - 4	116	6.5%	242	6.4%	390	6.2%
Age 5 - 9	121	6.8%	244	6.4%	388	6.2%
Age 10 - 14	115	6.4%	237	6.2%	384	6.1%
Age 15 - 19	119	6.7%	246	6.5%	398	6.4%
Age 20 - 24	100	5.6%	210	5.5%	353	5.6%
Age 25 - 34	224	12.6%	480	12.6%	794	12.7%
Age 35 - 44	235	13.2%	493	13.0%	804	12.9%
Age 45 - 54	249	14.0%	526	13.9%	863	13.8%
Age 55 - 64	224	12.6%	507	13.4%	870	13.9%
Age 65 - 74	167	9.4%	375	9.9%	637	10.2%
Age 75 - 84	81	4.5%	173	4.6%	276	4.4%
Age 85+	33	1.8%	63	1.7%	91	1.5%

2021 Population by Age	1 mile		2 miles		3 miles	
	Number	Percent	Number	Percent	Number	Percent
Age 0 - 4	112	6.1%	237	6.1%	385	5.9%
Age 5 - 9	116	6.4%	248	6.3%	407	6.3%
Age 10 - 14	127	7.0%	261	6.7%	422	6.5%
Age 15 - 19	126	6.9%	259	6.6%	419	6.4%
Age 20 - 24	94	5.2%	194	5.0%	322	5.0%
Age 25 - 34	203	11.1%	433	11.1%	720	11.1%
Age 35 - 44	231	12.7%	502	12.8%	841	12.9%
Age 45 - 54	242	13.3%	511	13.0%	844	13.0%
Age 55 - 64	248	13.6%	552	14.1%	933	14.3%
Age 65 - 74	192	10.5%	437	11.2%	754	11.6%
Age 75 - 84	97	5.3%	213	5.4%	353	5.4%
Age 85+	34	1.9%	69	1.8%	104	1.6%

Source: U.S. Census Bureau, Census 2010 Summary File 1. Esri forecasts for 2016 and 2021.



Demographic and Income Comparison Profile

2832 Geer Hwy, Marietta, South Carolina, 29661
Rings: 1, 2, 3 mile radii

For Reference Use Only

Latitude: 35.02090

Longitude: -82.50177

2010 Race and Ethnicity	1 mile		2 miles		3 miles	
	Number	Percent	Number	Percent	Number	Percent
White Alone	1,565	87.8%	3,339	89.3%	5,487	90.3%
Black Alone	50	2.8%	124	3.3%	235	3.9%
American Indian Alone	10	0.6%	16	0.4%	22	0.4%
Asian Alone	3	0.2%	7	0.2%	13	0.2%
Pacific Islander Alone	0	0.0%	0	0.0%	1	0.0%
Some Other Race Alone	130	7.3%	199	5.3%	232	3.8%
Two or More Races	24	1.3%	53	1.4%	89	1.5%
Hispanic Origin (Any Race)	166	9.3%	264	7.1%	324	5.3%

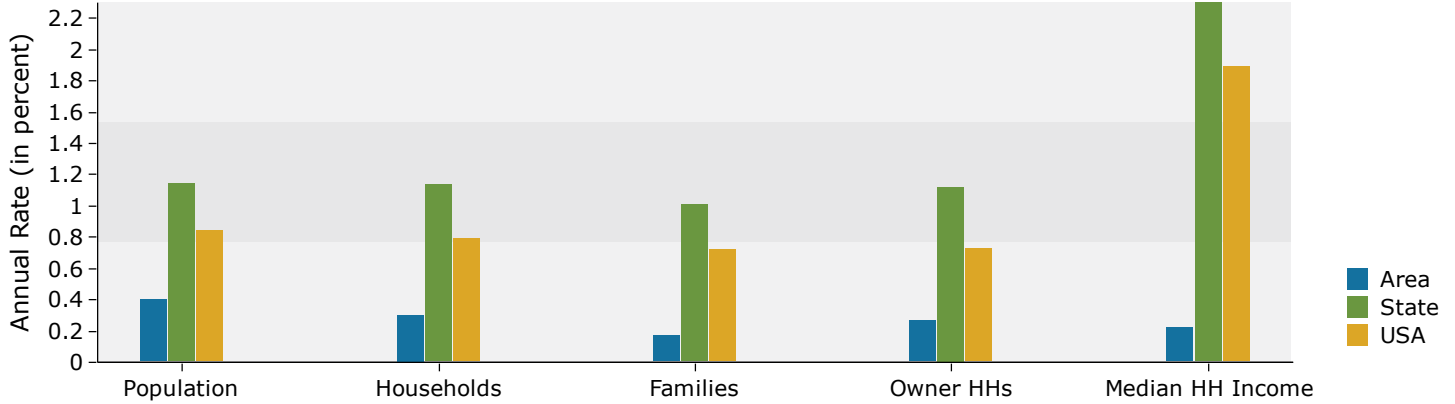
2016 Race and Ethnicity	1 mile		2 miles		3 miles	
	Number	Percent	Number	Percent	Number	Percent
White Alone	1,540	86.3%	3,346	88.1%	5,582	89.3%
Black Alone	51	2.9%	126	3.3%	243	3.9%
American Indian Alone	10	0.6%	17	0.4%	24	0.4%
Asian Alone	3	0.2%	7	0.2%	14	0.2%
Pacific Islander Alone	0	0.0%	0	0.0%	1	0.0%
Some Other Race Alone	151	8.5%	233	6.1%	272	4.4%
Two or More Races	30	1.7%	67	1.8%	114	1.8%
Hispanic Origin (Any Race)	192	10.8%	308	8.1%	382	6.1%

2021 Race and Ethnicity	1 mile		2 miles		3 miles	
	Number	Percent	Number	Percent	Number	Percent
White Alone	1,545	84.8%	3,407	87.0%	5,747	88.4%
Black Alone	52	2.9%	131	3.3%	255	3.9%
American Indian Alone	11	0.6%	19	0.5%	27	0.4%
Asian Alone	3	0.2%	8	0.2%	16	0.2%
Pacific Islander Alone	0	0.0%	0	0.0%	1	0.0%
Some Other Race Alone	173	9.5%	268	6.8%	315	4.8%
Two or More Races	37	2.0%	83	2.1%	142	2.2%
Hispanic Origin (Any Race)	222	12.2%	357	9.1%	446	6.9%

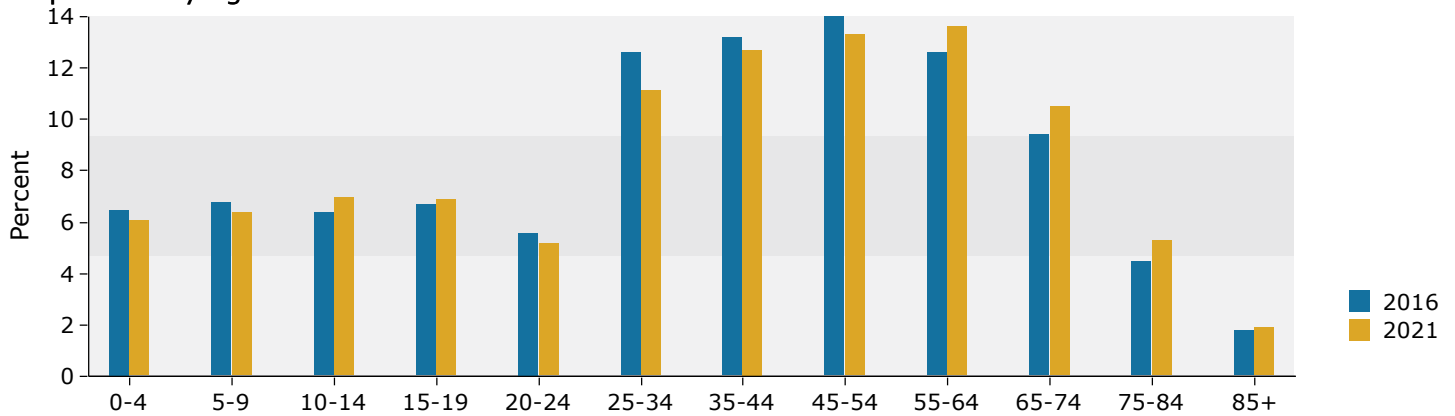
Source: U.S. Census Bureau, Census 2010 Summary File 1. Esri forecasts for 2016 and 2021.

1 mile

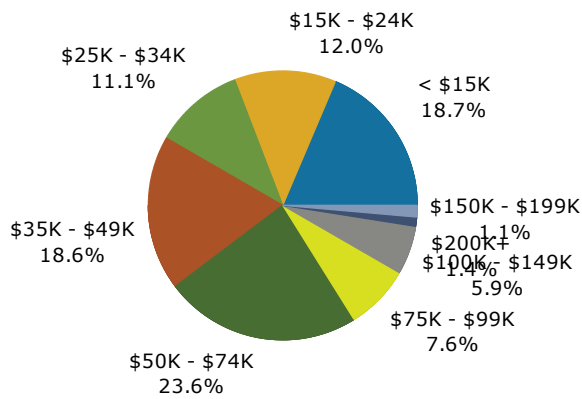
Trends 2016-2021



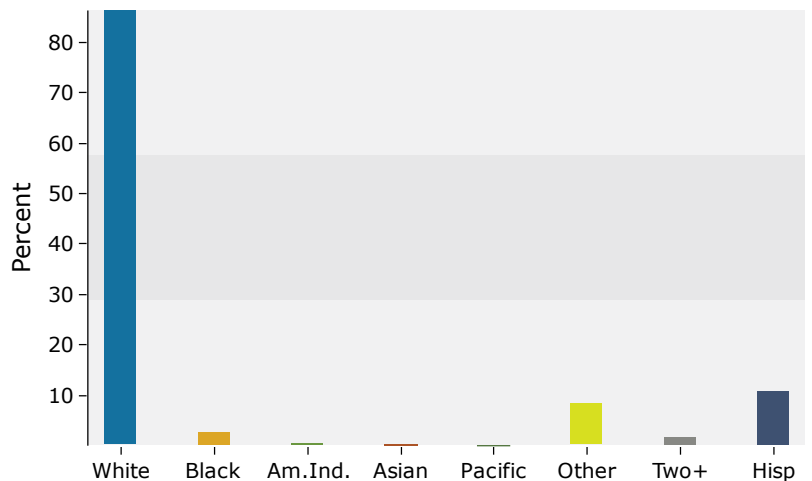
Population by Age



2016 Household Income



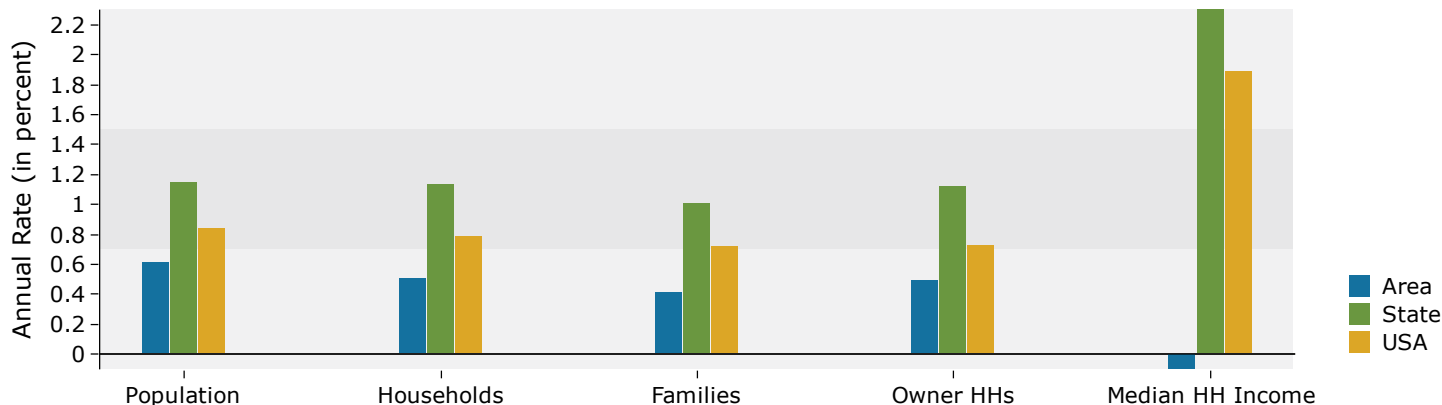
2016 Population by Race



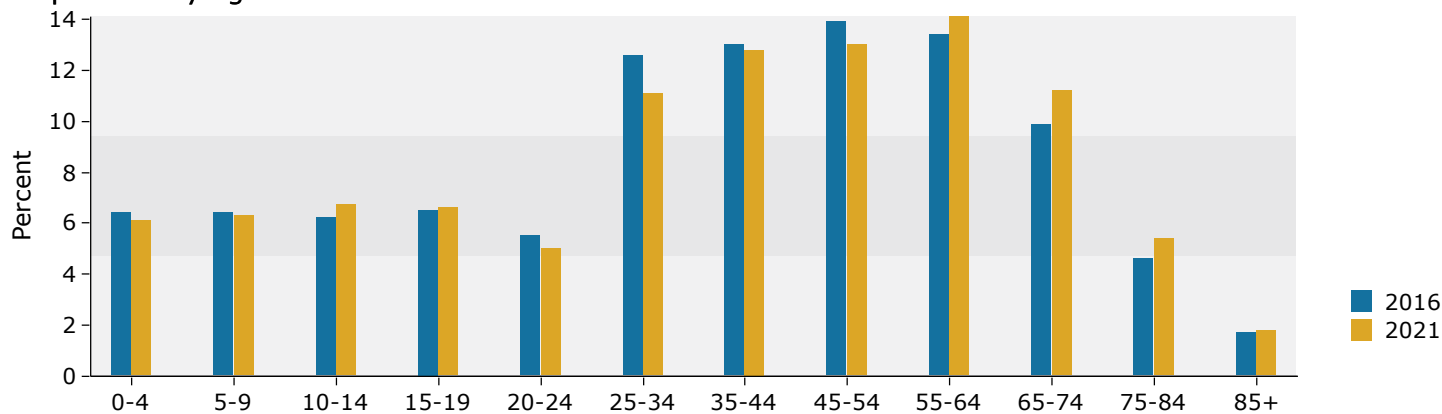
Source: U.S. Census Bureau, Census 2010 Summary File 1. Esri forecasts for 2016 and 2021.

2 miles

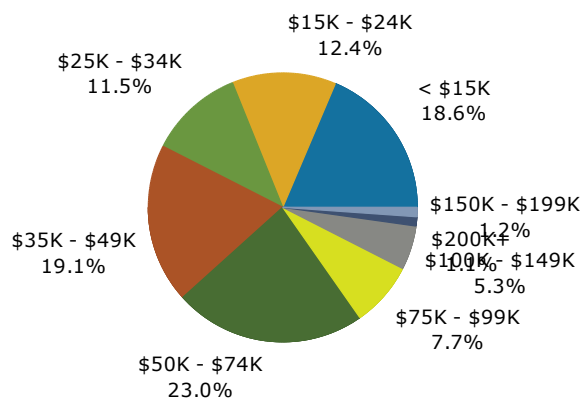
Trends 2016-2021



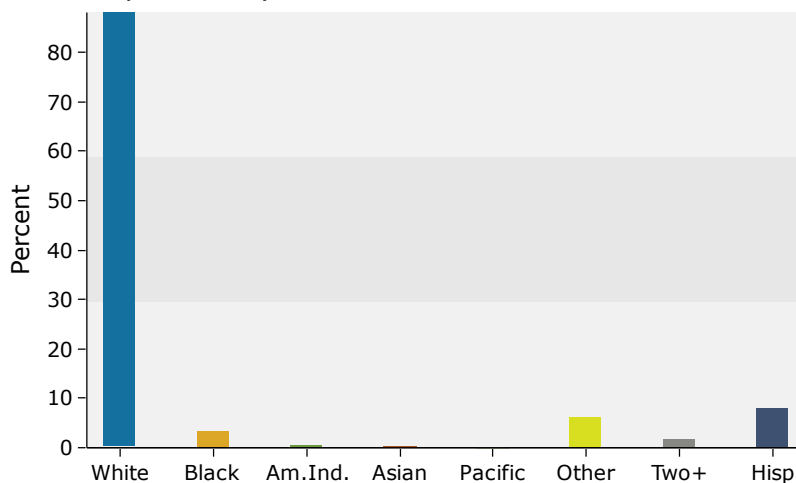
Population by Age



2016 Household Income



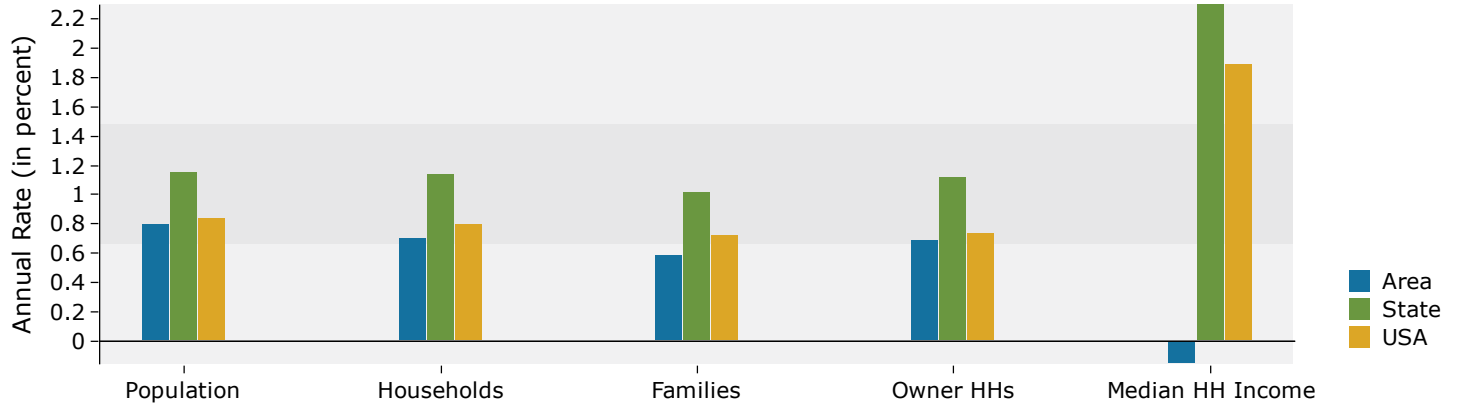
2016 Population by Race



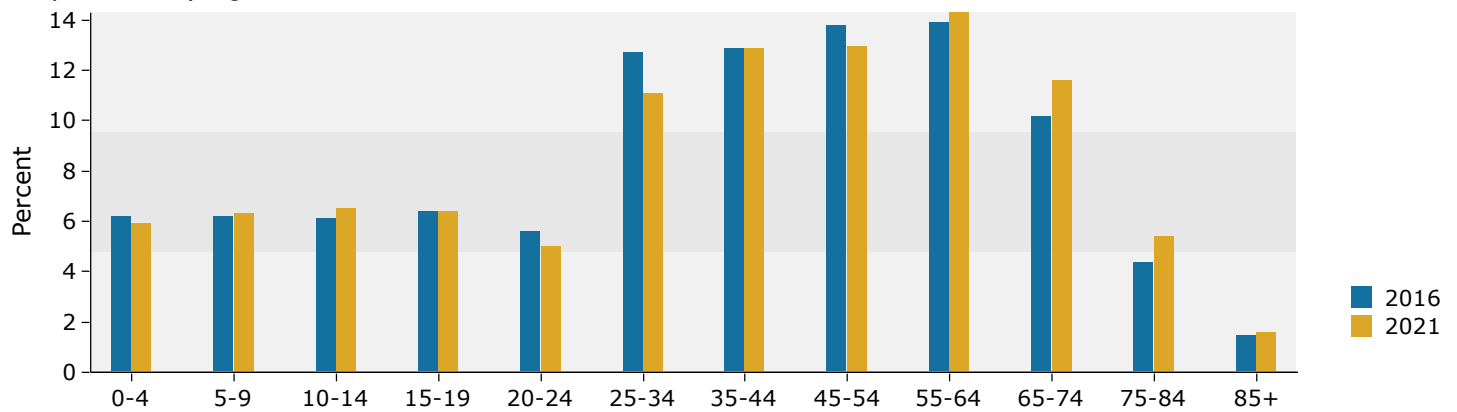
Source: U.S. Census Bureau, Census 2010 Summary File 1. Esri forecasts for 2016 and 2021.

3 miles

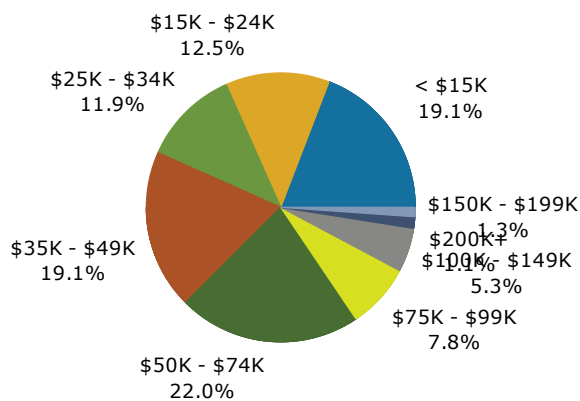
Trends 2016-2021



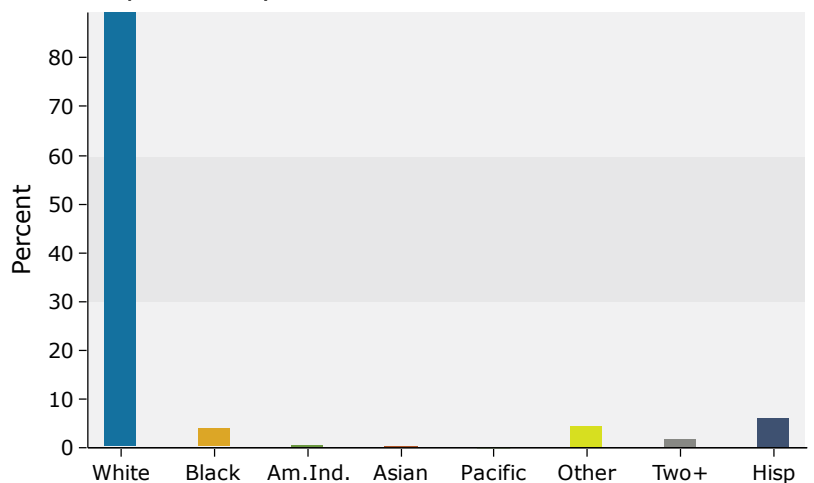
Population by Age



2016 Household Income



2016 Population by Race



Source: U.S. Census Bureau, Census 2010 Summary File 1. Esri forecasts for 2016 and 2021.